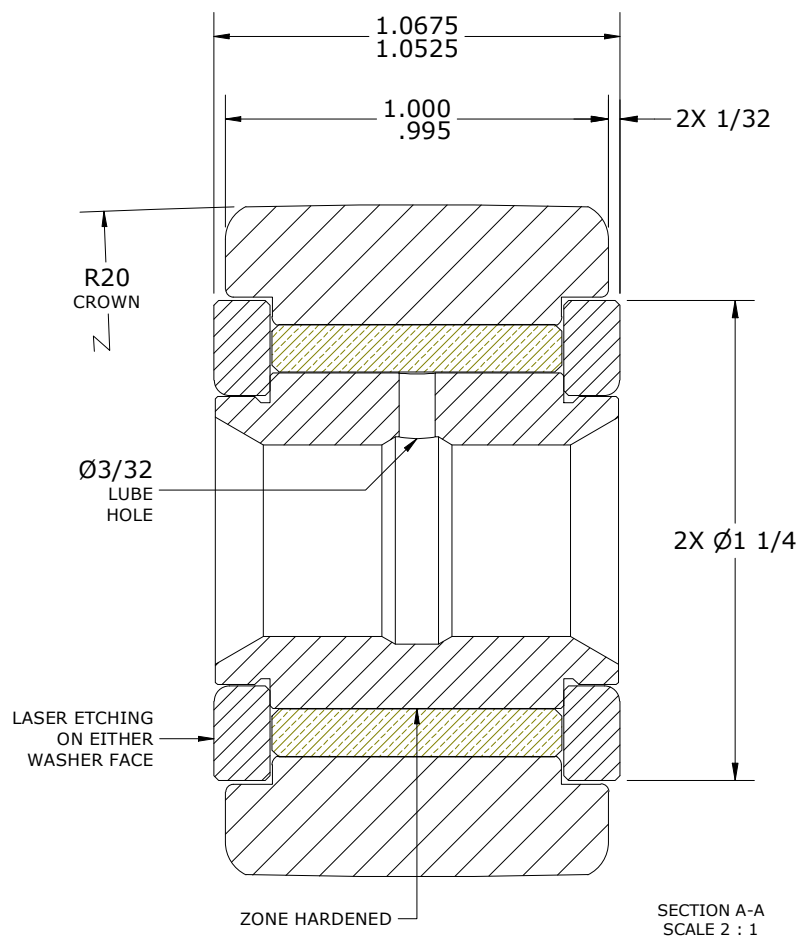
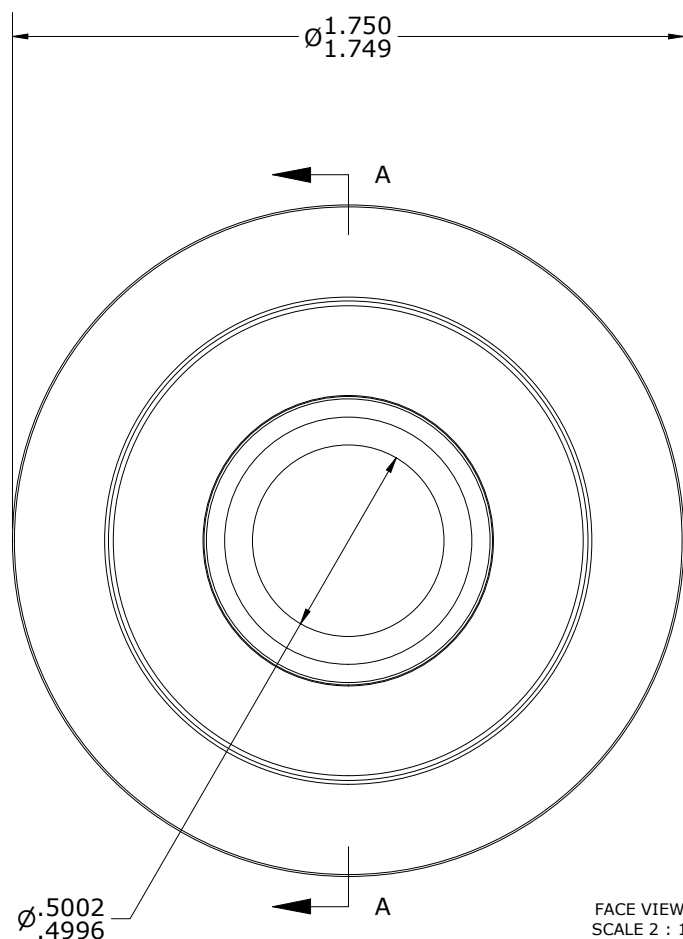
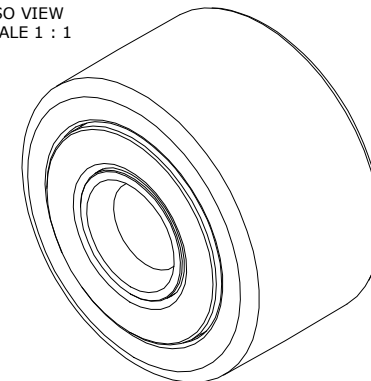


NOTES:

1. BUSHING IS IMPREGNATED WITH CARTER STANDARD NEVERLUBE LUBRICANT
2. ALL EXPOSED SURFACES HAVE BLACK OXIDE
3. CUSTOM LASER ETCHING IS AVAILABLE UPON REQUEST

ISO VIEW  
SCALE 1 : 1



MATERIAL NOTES:

- OUTER RING - BEARING STEEL, HEAT TREATED
- INNER RING - BEARING STEEL, ZONE HARDENED
- WASHER(S) - BEARING STEEL, HEAT TREATED
- BUSHING - SINTERED BRONZE

CUSTOMER PART#

XX = ± .01  
XXX = ± .005  
XXXX = ± .0005  
ANGLES = ± 2'  
INCH [METRIC]  
FRACTION = ± 1/64

CARTER MANUFACTURING IS NOT RESPONSIBLE FOR TYPOGRAPHICAL ERRORS

**CARTER MANUFACTURING CO., INC.**

GRAND HAVEN, MICHIGAN 49417

ENGINEERING CHANGE ORDER NOTE

CARTER STANDARD SURFACE FINISH IS MEASURED IN "Ra" UNITS UNLESS OTHERWISE SPECIFIED.

REVISION

A

REVISION BY

DJB

AUTHOR BY

HG

DATE

2/16/2026

PART NAME: ASSEMBLY

DRAWN BY

DJB

DATE

1/7/2026

CHK'D BY

MD

DATE

2/16/2026

SALES

NC

DATE

2/16/2026

Neverlube™, Standard YR

MATERIAL

NOTED

SHEET

1 OF 2