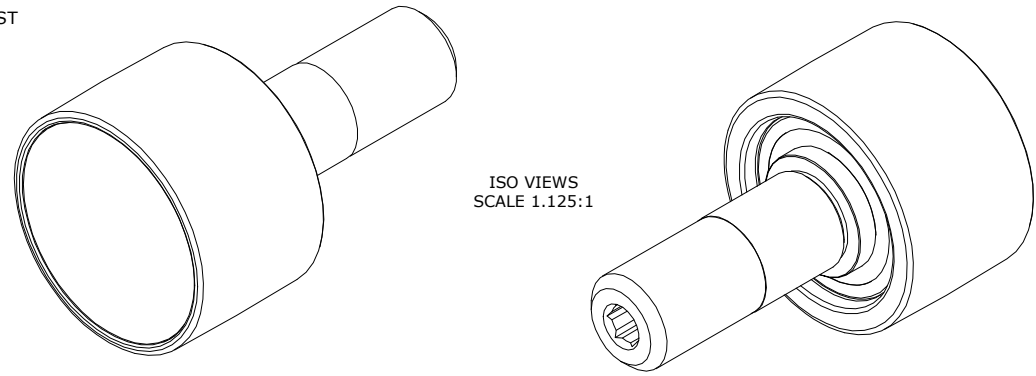


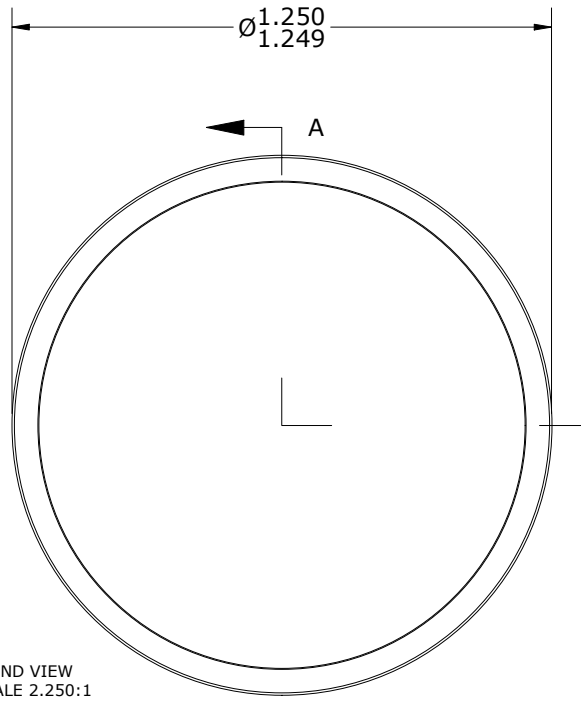
LOAD RATINGS		
RATING	lbf	Newtons
RADIAL BASIC DYNAMIC	1,350	6,005
STATIC THRUST LOAD	370	1,646
MAXIMUM STATIC CAPACITY	600	2,669

- NOTES:
1. BALL BEARING(S) COME PRE-PACKED WITH GREASE
 2. ALL EXPOSED SURFACES HAVE BLACK OXIDE
 3. CUSTOM LASER ETCHING IS AVAILABLE UPON REQUEST
 4. RECOMMENDED MOUNTING HOLE DIAMETER:
 - A. .501 +001" / -0
 5. RECOMMENDED INSTALL TORQUE
 - A. DRY THREADS = 15 ft lbs / 20 Nm
 - B. LUBRICATED THREADS = 8 ft lbs / 10 Nm

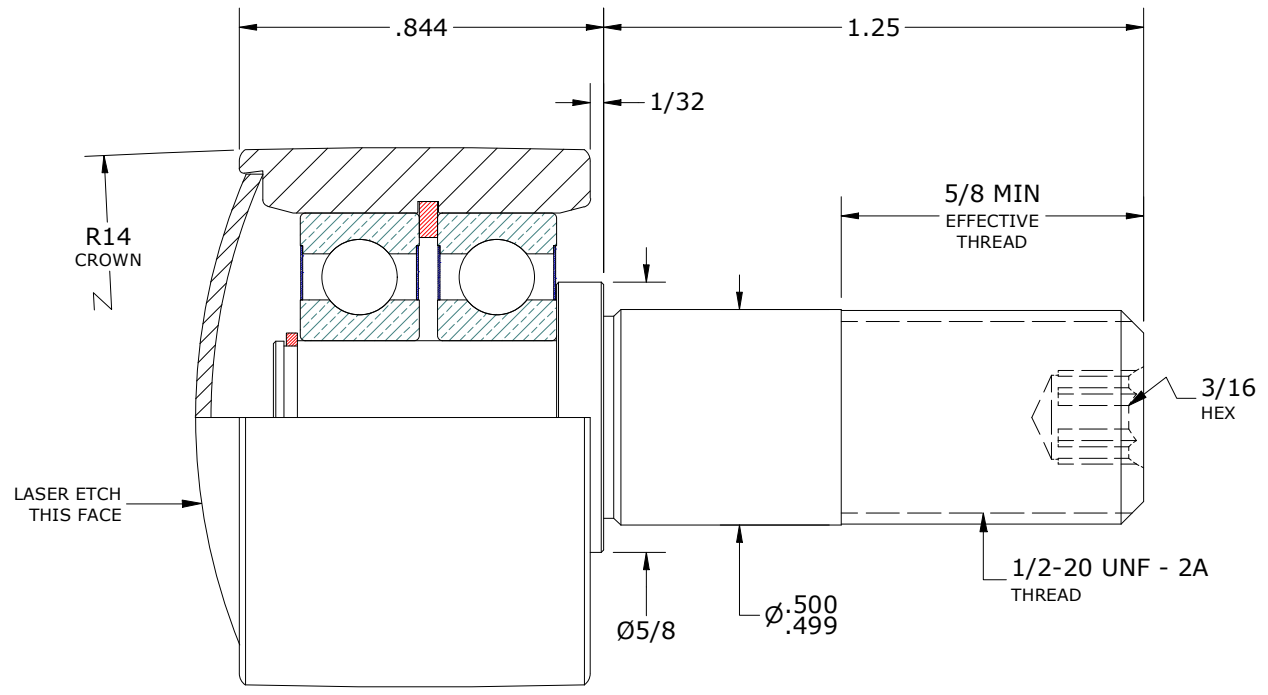
MS NO. _____ NSN NO. _____ DRAWING NO. CPHR-125-A



ISO VIEWS
SCALE 1.125:1



END VIEW
SCALE 2.250:1



SECTION A-A
SCALE 2.250:1

MATERIAL NOTES:
 OUTER ROLLER- BEARING STEEL, HEAT TREATED
 STUD - STEEL
 BALL BEARING ASSEMBLY(S) - 609.2RS
 RETAINING RING(S) - SPRING STEEL
 END CAP - STEEL

CUSTOMER PART# _____
 XX = ± .01
 XXX = ± .005
 XXXX = ± .0005
 ANGLES = ± 1'
 INCH [METRIC]
 FRACTION = ± 1/32

CARTER MANUFACTURING IS NOT RESPONSIBLE FOR TYPOGRAPHICAL ERRORS

CARTER MANUFACTURING CO., INC.
 GRAND HAVEN, MICHIGAN 49417

ENGINEERING CHANGE ORDER NOTE

REVISION		PART NAME: ASSEMBLY			
A	AUTHOR BY	DRAWN BY	CHK'D BY	SALES	MATERIAL
	HG	SGW	MD	NC	NOTED
REVISION BY	DATE	DATE	DATE	DATE	SHEET
SGW	3/2/2020	2/28/2020	3/2/2020	3/3/2020	1 OF 2