

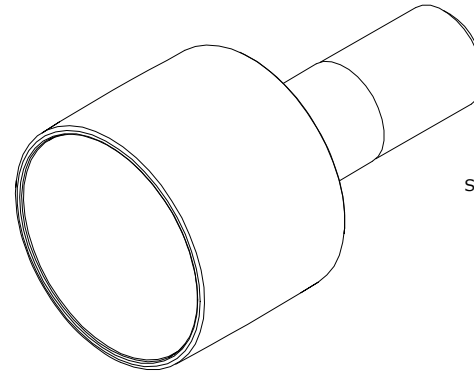
LOAD RATINGS		
RATING	lbf	Newtons
RADIAL BASIC DYNAMIC	2,760	12,277
STATIC THRUST LOAD	680	3,025
MAXIMUM STATIC CAPACITY	1,100	4,893

- NOTES:  
 1. BALL BEARINGS COME PRE-PACKED WITH GREASE  
 2. ALL EXPOSED SURFACES HAVE BLACK OXIDE  
 3. CUSTOM LASER ETCHING IS AVAILABLE UPON REQUEST

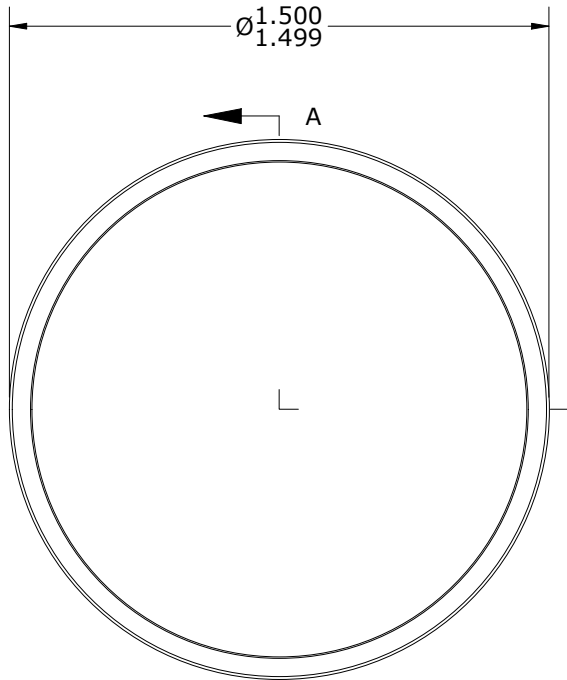
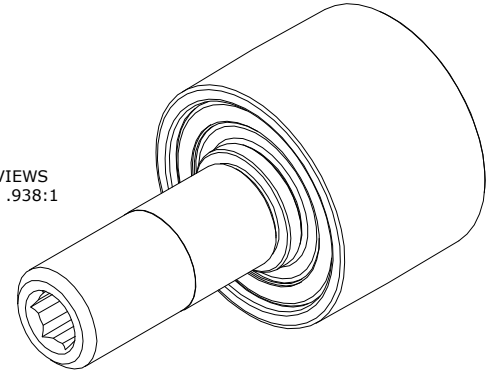
MS NO.	NSN NO.	DRAWING NO.	CPHR-150-A
--------	---------	-------------	------------

RECOMMENDED MOUNTING HOLE Ø		
Limit	Inch	mm
MIN	.626	15.9004
MAX	.627	15.9258

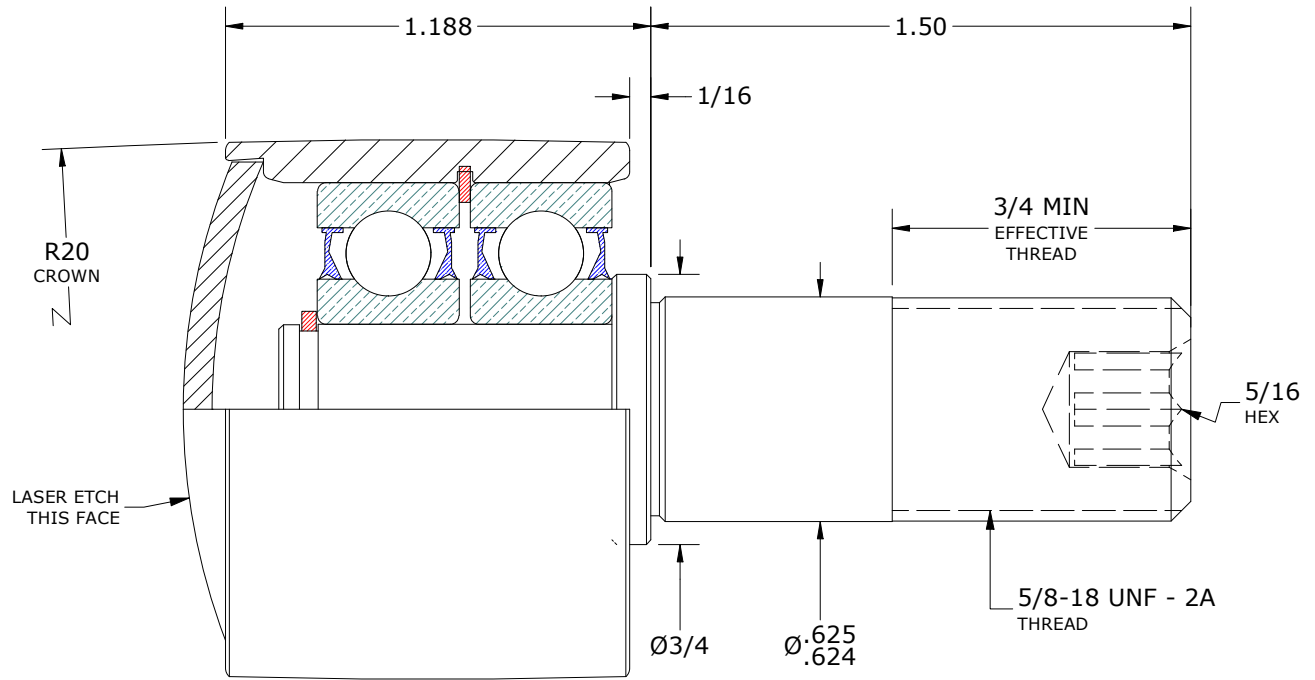
MAXIMUM CLAMPING TORQUE**		
Thread Type	Inch Lbs	Nm
LUBRICATED	25	34



ISO VIEWS  
SCALE .938:1



END VIEW  
SCALE 1.875:1



SECTION A-A  
SCALE 1.875:1

\*\*TORQUE SPECIFICATION IS BASED ON LUBRICATED THREADS, IF USING DRY THREADS DOUBLE TORQUE VALUE

MATERIAL NOTES:

- OUTER ROLLER HOUSING - BEARING STEEL, HEAT TREATED
- STUD - STEEL
- END CAP - STEEL
- BALL BEARING ASSEMBLY(S) - 6201 2RS, [2] REQ'D
- RETAINING RING(S) - SPRING STEEL

CUSTOMER PART#

XX = ± .01  
 XXX = ± .005  
 XXXX = ± .0005  
 ANGLES = ± 1'  
 INCH [METRIC]  
 FRACTION = ± 1/64

CARTER MANUFACTURING IS NOT RESPONSIBLE FOR TYPOGRAPHICAL ERRORS

**CARTER MANUFACTURING CO., INC.**  
 GRAND HAVEN, MICHIGAN 49417

ENGINEERING CHANGE ORDER NOTE

REVISION

PART NAME: ASSEMBLY

PRODUCT TYPE: Hi-Roller™

A

AUTHOR BY  
HG

DRAWN BY  
SGW

CHK'D BY  
MD

SALES  
NC

MATERIAL  
NOTED

REVISION BY  
SGW

DATE  
1/27/2022

DATE  
1/27/2022

DATE  
1/27/2022

DATE  
1/28/2022

SHEET  
1 OF 2