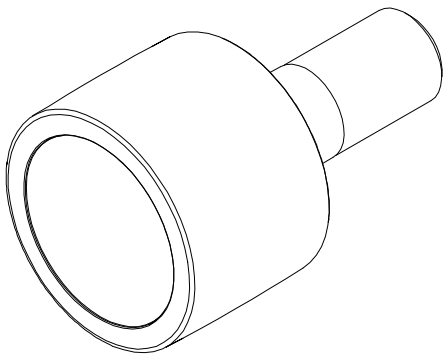


LOAD RATINGS	
RATING	Lbs
RADIAL BASIC DYNAMIC	3,830
STATIC THRUST LOAD	1,000
MAXIMUM STATIC CAPACITY	1,620

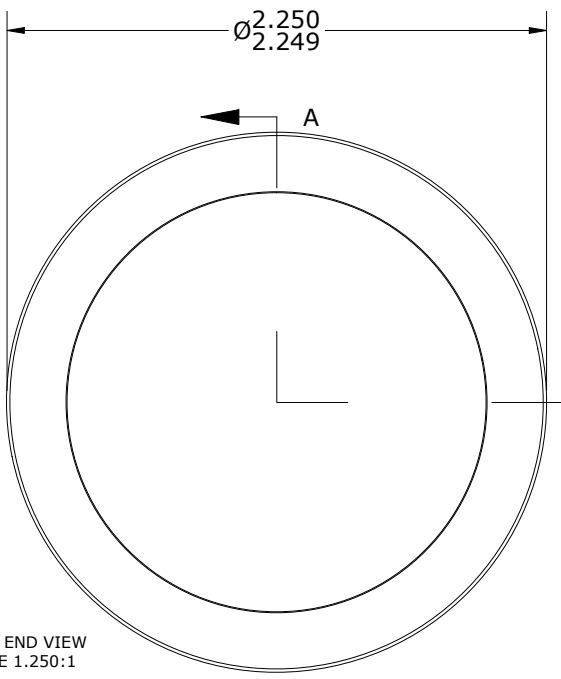
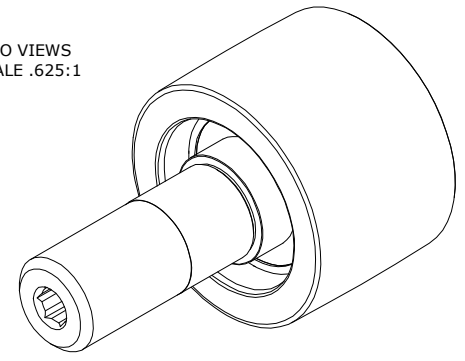
RECOMMENDED MOUNTING HOLE Ø		
Limit	Inch	mm
MIN	.876	22.2504
MAX	.877	22.2758

MAXIMUM CLAMPING TORQUE**		
Thread Type	ft lbs	Nm
LUBRICATED	25	34

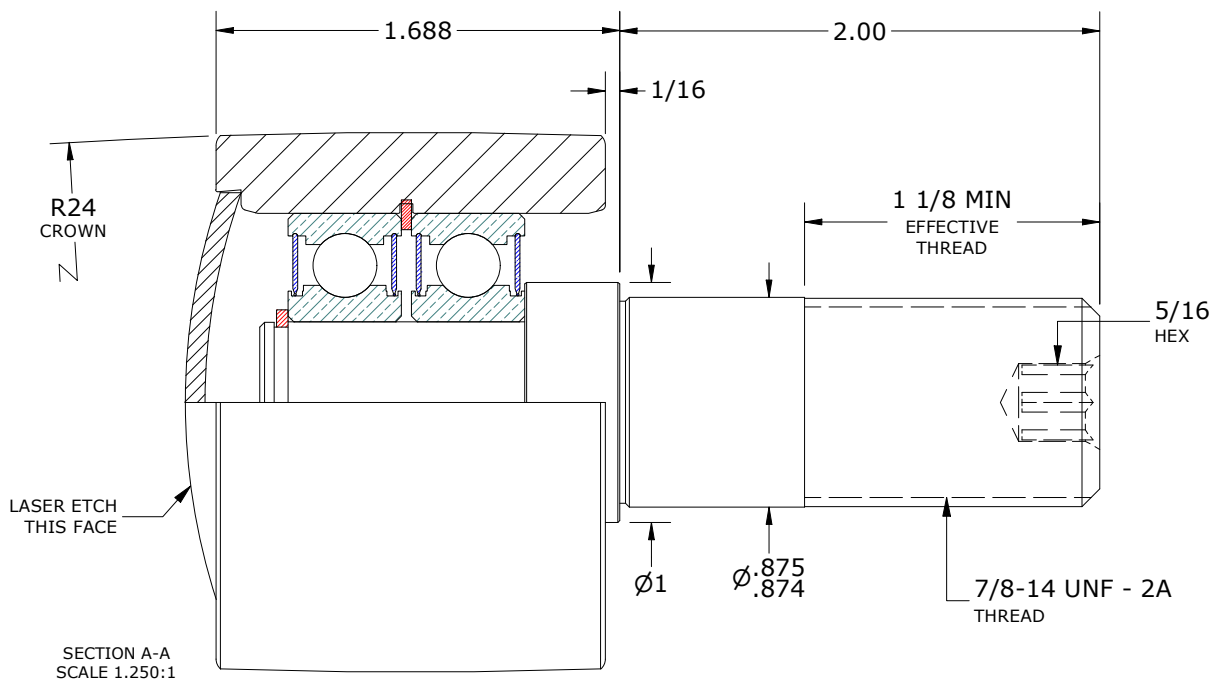
- NOTES:
 1. BALL BEARINGS COME PRE-PACKED WITH GREASE.
 2. ALL EXPOSED SURFACES HAVE BLACK OXIDE.
 3. CUSTOM LASER ETCHING IS AVAILABLE UPON REQUEST.



ISO VIEWS
SCALE .625:1



HEAD: END VIEW
SCALE 1.250:1



SECTION A-A
SCALE 1.250:1

**TORQUE SPECIFICATION IS BASED ON LUBRICATED THREADS, IF USING DRY THREADS DOUBLE TORQUE VALUE

MATERIAL NOTES:
 OUTER ROLLER HOUSING - BEARING STEEL, HEAT TREATED
 STUD - STEEL
 BALL BEARING(S) - 6203 2RS
 RETAINING RING(S) - SPRING STEEL
 END CAP - STEEL

CUSTOMER PART#	XX = ± .01 XXX = ± .005 XXXX = ± .0005 ANGLES = ± 2' INCH [METRIC] FRACTION = ± 1/64
ENGINEERING CHANGE ORDER NOTE	

CARTER MANUFACTURING IS NOT RESPONSIBLE FOR TYPOGRAPHICAL ERRORS

CARTER MANUFACTURING CO., INC.
 GRAND HAVEN, MICHIGAN 49417

REVISION		PART NAME: ASSEMBLY			PRODUCT TYPE: Hi-Roller™	
A	AUTHOR BY HG	DRAWN BY SGW	CHK'D BY MD	SALES NC	MATERIAL NOTED	
REVISION BY SGW	DATE 5/17/2022	DATE 5/16/2022	DATE 5/17/2022	DATE 5/17/2022	SHEET 1 OF 2	