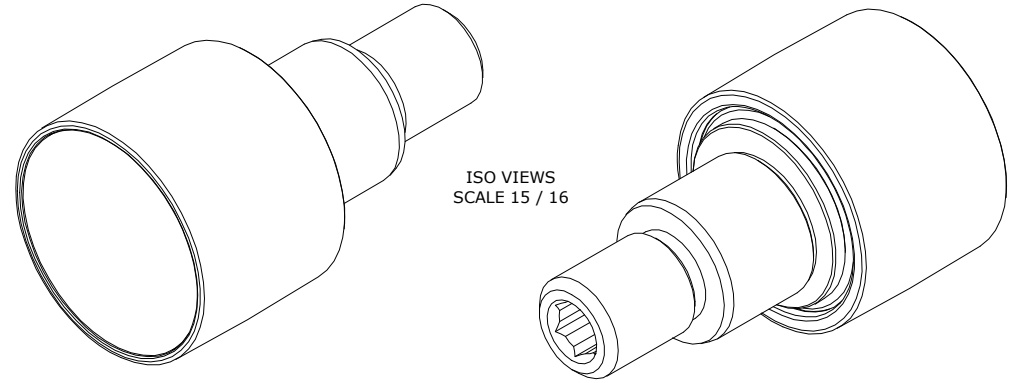


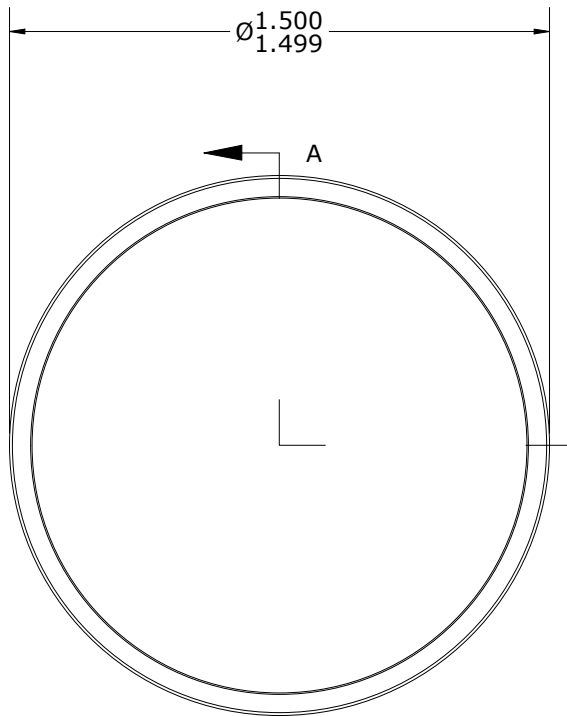
LOAD RATINGS	
RATING	Lbs
RADIAL BASIC DYNAMIC	2,760
STATIC THRUST LOAD	680
MAXIMUM STATIC CAPACITY	1,100

- NOTES:
 1. BALL BEARINGS COME PRE-PACKED WITH GREASE
 2. ALL EXPOSED SURFACES HAVE BLACK OXIDE
 3. CUSTOM LASER ETCHING IS AVAILABLE UPON REQUEST

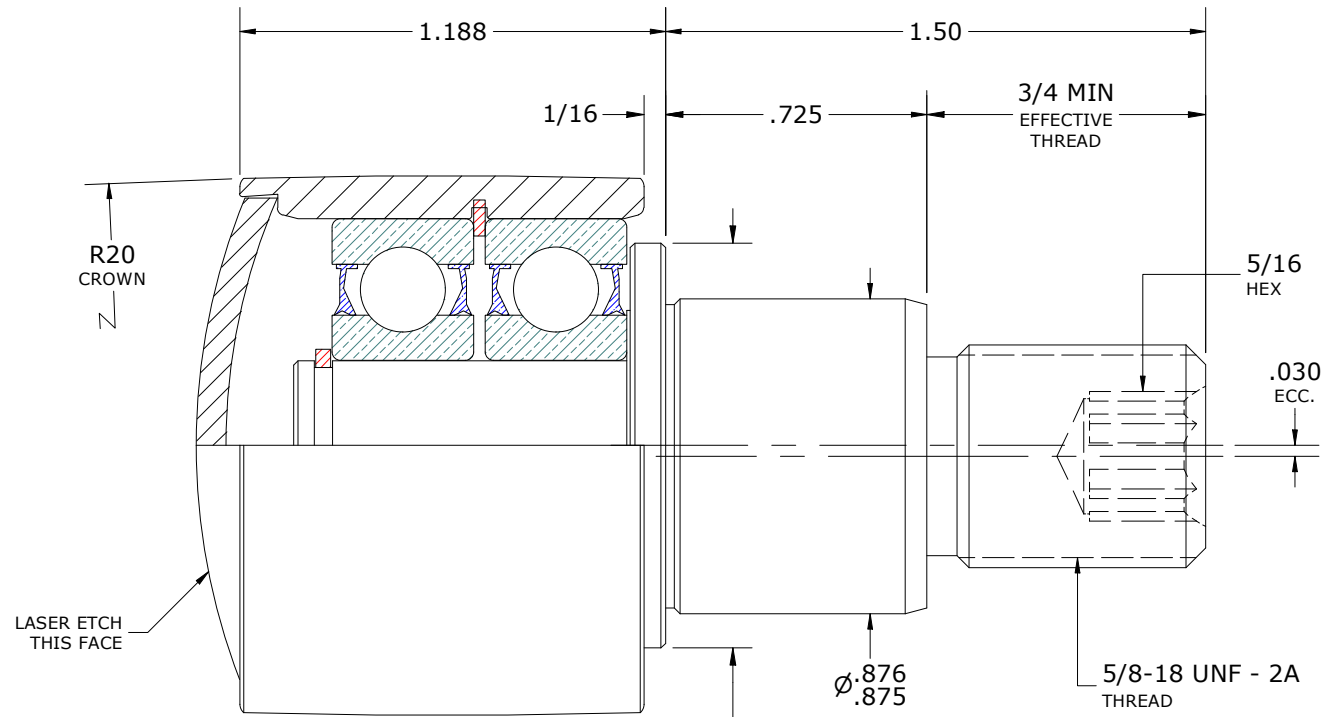
DRAWING NO. CPHRE-150-A



ISO VIEWS
SCALE 15 / 16



FACE VIEW
SCALE 1.875 : 1



SECTION A-A
SCALE 1.875 : 1

MATERIAL NOTES:

- OUTER RING - BEARING STEEL, HEAT TREATED
- STUD - STEEL
- BEARING ASSEMBLIES - 62012RS
- INTERNAL RETAINING RING - 775
- EXTERNAL RETAINING RING - 584
- END CAP - STEEL

CUSTOMER PART#

XX = ± .01
 XXX = ± .005
 XXXX = ± .0005
 ANGLES = ± 2'
 INCH [METRIC]
 FRACTION = ± 1/64

CARTER MANUFACTURING IS NOT RESPONSIBLE FOR TYPOGRAPHICAL ERRORS

CARTER MANUFACTURING CO., INC.

GRAND HAVEN, MICHIGAN 49417

ENGINEERING CHANGE ORDER NOTE

CARTER STANDARD SURFACE FINISH IS MEASURED IN "Ra" UNITS UNLESS OTHERWISE SPECIFIED.

REVISION

A

REVISION BY

DJB

AUTHOR BY

HG

DATE

11/14/2025

PART NAME: ASSEMBLY

DRAWN BY

DJB

DATE

11/14/2025

CHK'D BY

MD

DATE

11/14/2025

PRODUCT TYPE: Hi-Rollers™

SALES

NC

DATE

11/14/2025

MATERIAL

NOTED

SHEET

1 OF 2