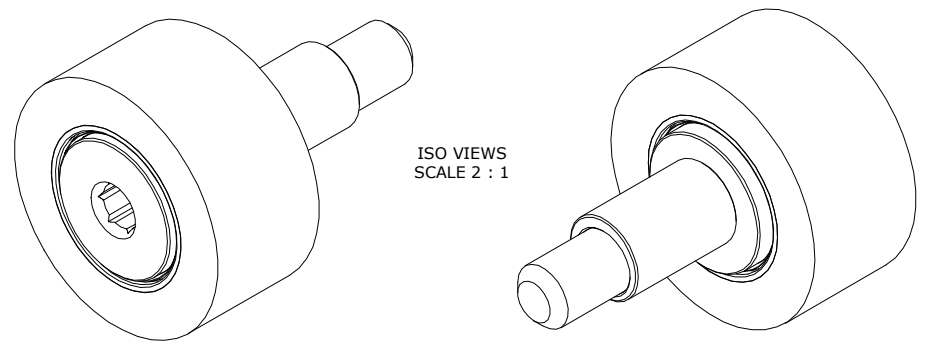


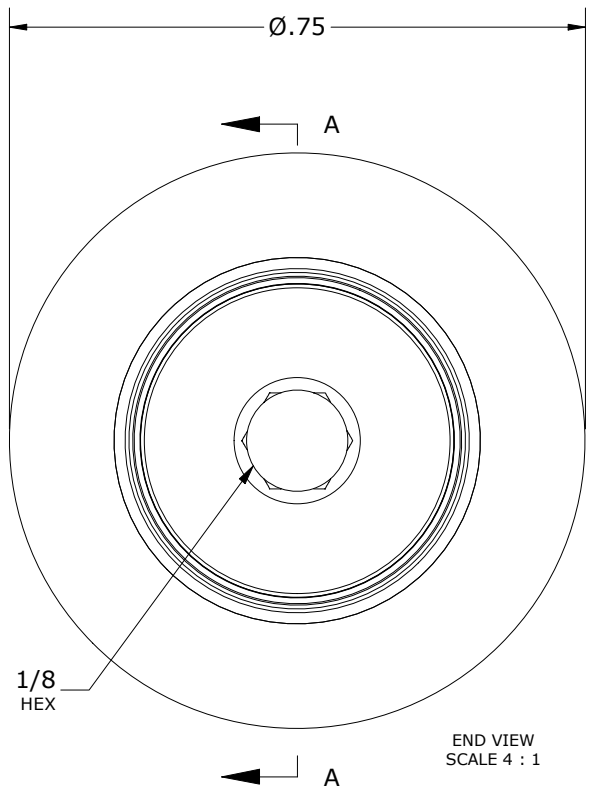
RECOMMENDED MOUNTING HOLE Ø		
Limit	Inch	mm
MIN	.252	6.4008
MAX	.254	6.4516

MAXIMUM CLAMPING TORQUE**		
Thread Type	Inch Lbs	Nm
LUBRICATED	7.5	.85

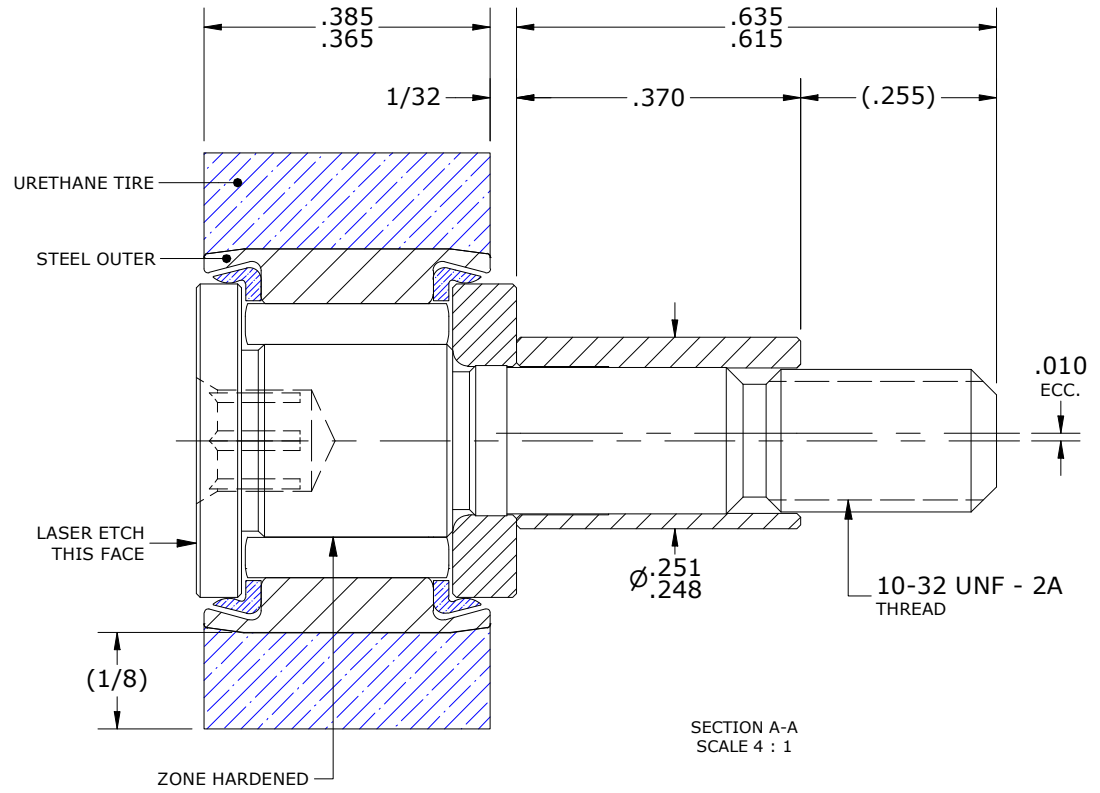
- NOTES:
- BEARING IS PACKED WITH NLGI GRADE 2, LITHIUM BASED. GREASE UNLESS OTHERWISE SPECIFIED.
  - URETHANE SPECIFICATIONS:
    - DUROMETER = 80 SHORE A.
    - COLOR = BLUE.
  - ALL EXPOSED STEEL SURFACES HAVE BLACK OXIDE.
  - CUSTOM LASER ETCHING IS AVAILABLE UPON REQUEST.



ISO VIEWS  
SCALE 2 : 1



END VIEW  
SCALE 4 : 1



SECTION A-A  
SCALE 4 : 1

\*\*TORQUE SPECIFICATION IS BASED ON LUBRICATED THREADS, IF USING DRY THREADS DOUBLE TORQUE VALUE

MATERIAL NOTES:

OUTER RING - BEARING STEEL, HEAT TREATED
OUTER TIRE - URETHANE
STUD - BEARING STEEL, ZONE HARDENED
NEEDLE ROLLER(S) - BEARING STEEL, HEAT TREATED
WASHER - BEARING STEEL, HEAT TREATED
SEAL(S) - SYNTHETIC
ECCENTRIC SLEEVE - STEEL

CUSTOMER PART#	XX = ± .01 XXX = ± .005 XXXX = ± .0005 ANGLES = ± 2' INCH [METRIC] FRACTION = ± 1/64
<b>ENGINEERING CHANGE ORDER NOTE</b>	

CARTER MANUFACTURING IS NOT RESPONSIBLE FOR TYPOGRAPHICAL ERRORS				<b>CARTER MANUFACTURING CO., INC.</b> GRAND HAVEN, MICHIGAN 49417			
<b>REVISION</b>				PART NAME: ASSEMBLY		PRODUCT TYPE: CRT	
<b>E</b>	AUTHOR BY HG	DRAWN BY SGW	CHK'D BY MD	SALES NC	MATERIAL NOTED		
REVISION BY SGW	DATE 4/6/2023	DATE 4/6/2020	DATE 4/5/2023	DATE 4/7/2020	SHEET 1 OF 2		