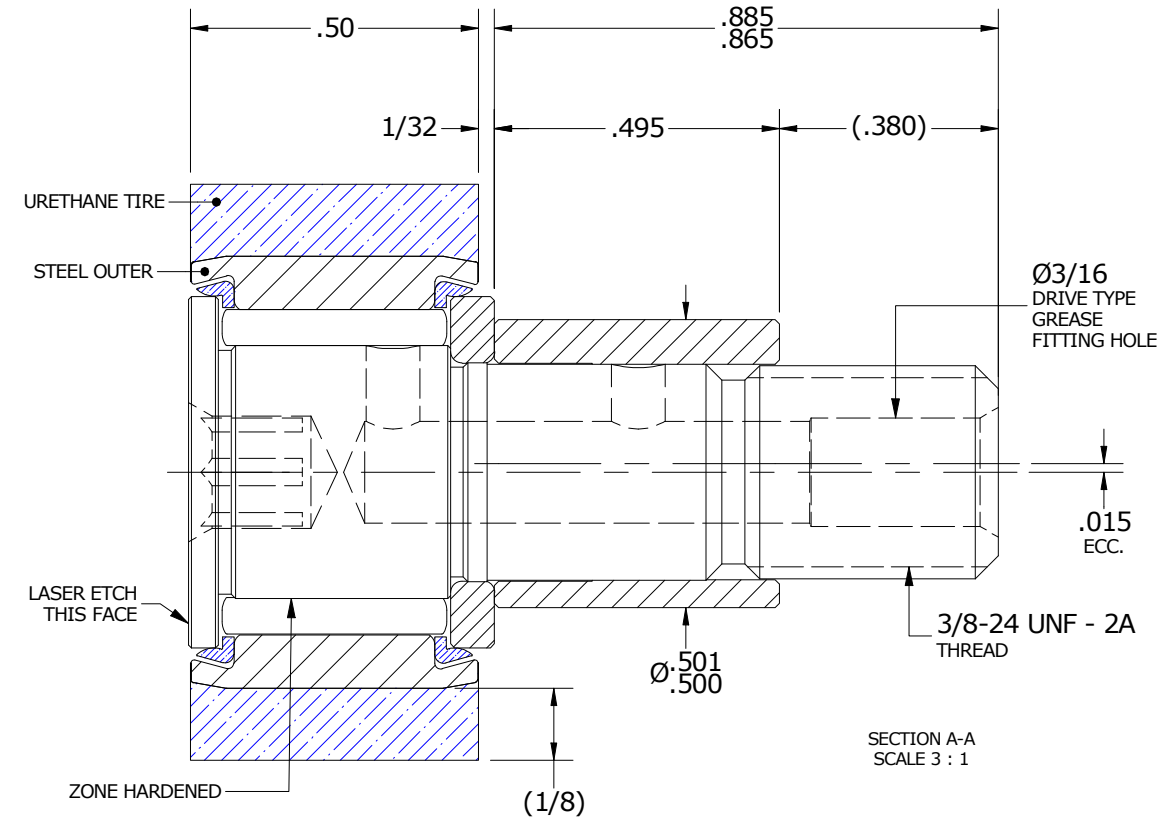
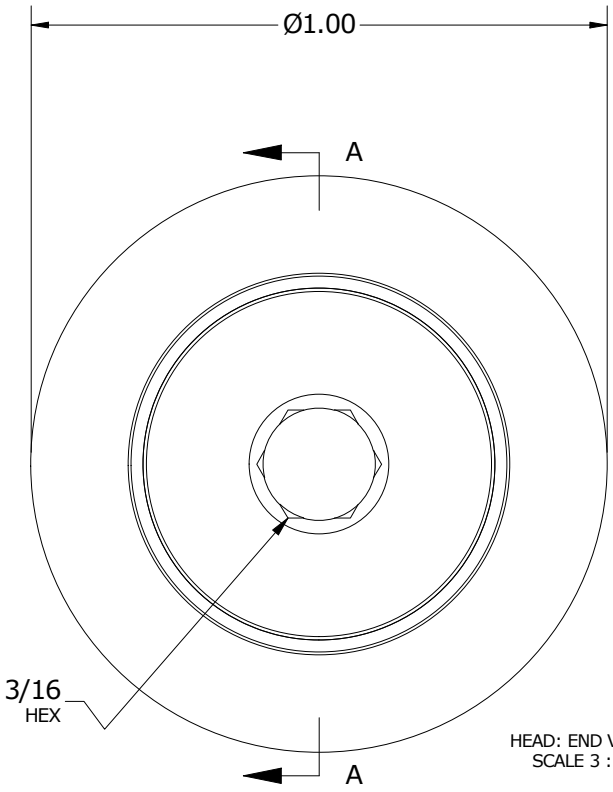
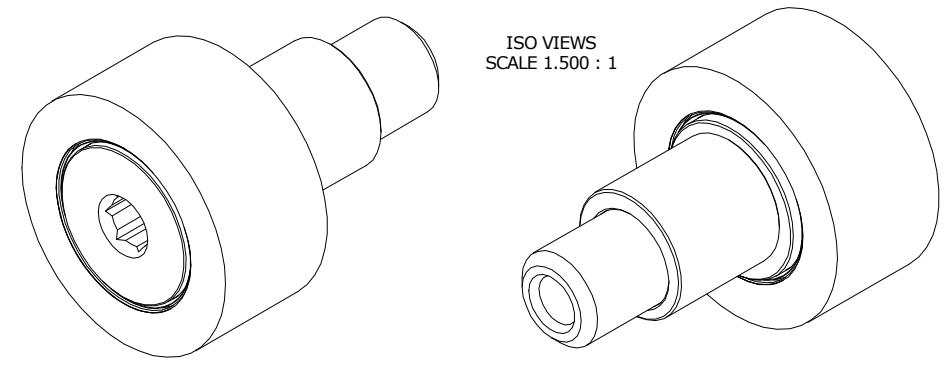


RECOMMENDED MOUNTING HOLE Ø		
Limit	Inch	mm
MIN	.502	12.7508
MAX	.504	12.8016

MAXIMUM CLAMPING TORQUE**		
Thread Type	Inch Lbs	Nm
LUBRICATED	47.5	5.5

- NOTES:
- BEARING IS PACKED WITH NLGI GRADE 2, LITHIUM BASED, GREASE UNLESS OTHERWISE SPECIFIED.
  - URETHANE SPECIFICATIONS:
    - DUROMETER = 80 SHORE A.
    - COLOR = BLUE.
  - ALL EXPOSED STEEL SURFACES HAVE BLACK OXIDE.
  - CUSTOM LASER ETCHING IS AVAILABLE UPON REQUEST.

MS NO. \_\_\_\_\_ NSN NO. \_\_\_\_\_ DRAWING NO. CRTE-32-SB



\*\*TORQUE SPECIFICATION IS BASED ON LUBRICATED THREADS, IF USING DRY THREADS DOUBLE TORQUE VALUE

MATERIAL NOTES:

OUTER TIRE - URETHANE  
 OUTER RING - BEARING STEEL, HEAT TREATED  
 STUD - BEARING STEEL, ZONE HARDENED  
 NEEDLE ROLLER(S) - BEARING STEEL, HEAT TREATED  
 WASHER - BEARING STEEL, HEAT TREATED  
 SEAL(S) - SYNTHETIC  
 ECCENTRIC SLEEVE - STEEL

CUSTOMER PART#	XX = ± .01 XXX = ± .005 XXXX = ± .0005 ANGLES = ± 1' INCH [METRIC] FRACTION = ± 1/32
ENGINEERING CHANGE ORDER NOTE	

CARTER MANUFACTURING IS NOT RESPONSIBLE FOR TYPOGRAPHICAL ERRORS		<b>CARTER MANUFACTURING CO., INC.</b> GRAND HAVEN, MICHIGAN 49417			
REVISION		PART NAME: Assembly		PRODUCT TYPE: CRT	
<b>B</b>	AUTHOR BY HG	DRAWN BY MD	CHK'D BY MD	SALES KR	MATERIAL NOTED
REVISION BY SGW	DATE 8/26/2020	DATE 10/27/2011	DATE 8/25/2020	DATE 10/27/2011	SHEET 1 OF 2