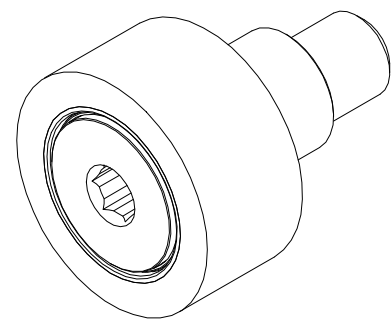


RECOMMENDED MOUNTING HOLE Ø		
Limit	Inch	mm
MIN	.627	15.0090
MAX	.629	15.9766

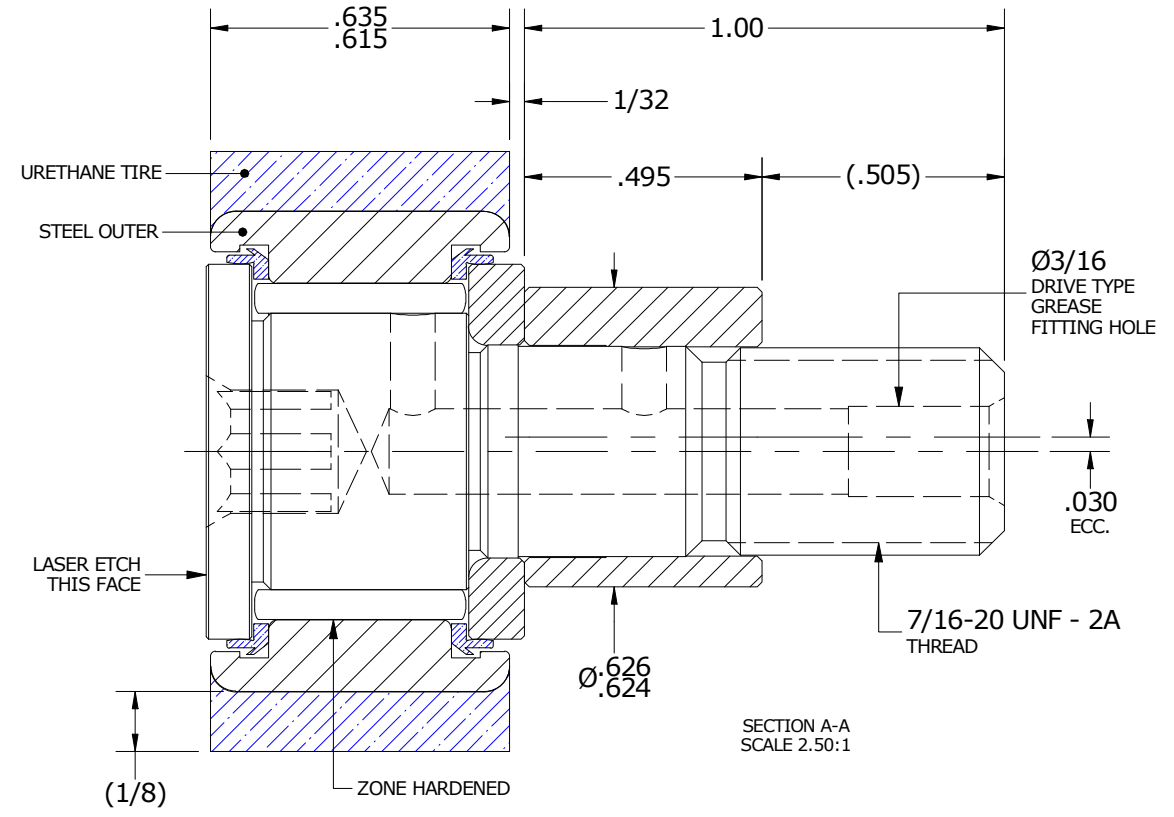
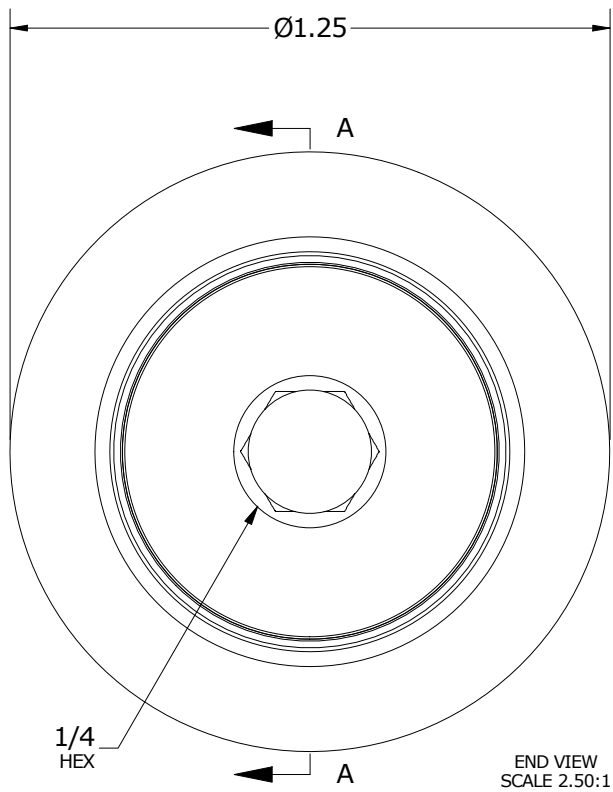
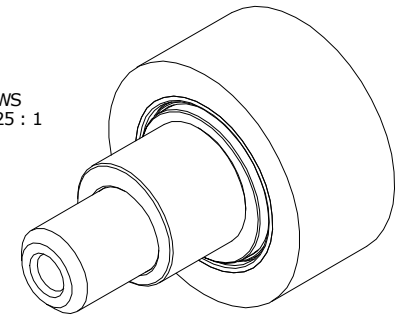
MAXIMUM CLAMPING TORQUE**		
Thread Type	Inch Lbs	Nm
LUBRICATED	125	14

- NOTES:
- BEARING IS PACKED WITH NLGI GRADE 2, LITHIUM BASED GREASE UNLESS OTHERWISE SPECIFIED
 - URETHANE SPECIFICATIONS:
 - DUROMETER = 80 SHORE A
 - COLOR = BLUE
 - ALL EXPOSED STEEL SURFACES HAVE BLACK OXIDE
 - CUSTOM LASER ETCHING AVAILABLE UPON REQUEST

MS NO. _____ NSN NO. _____ DRAWING NO. CRTE-40-SB



ISO VIEWS
SCALE 1.125 : 1



**TORQUE SPECIFICATION IS BASED ON LUBRICATED THREADS, IF USING DRY THREADS DOUBLE TORQUE VALUE

MATERIAL NOTES:

OUTER RING - BEARING STEEL, HEAT TREATED
TIRE - URETHANE
STUD - BEARING STEEL, ZONE HARDENED
NEEDLE ROLLER(S) - BEARING STEEL, HEAT TREATED
WASHER - BEARING STEEL, HEAT TREATED
SEAL(S) - SYNTHETIC
ECCENTRIC SLEEVE - STEEL

CUSTOMER PART#	XX = ± .01 XXX = ± .005 XXXX = ± .0005 ANGLES = ± 1' INCH [METRIC] FRACTION = ± 1/32
ENGINEERING CHANGE ORDER NOTE	

CARTER MANUFACTURING IS NOT RESPONSIBLE FOR TYPOGRAPHICAL ERRORS		CARTER MANUFACTURING CO., INC. GRAND HAVEN, MICHIGAN 49417			
REVISION		PART NAME: Assembly		PRODUCT TYPE: CRT	
C	AUTHOR BY HG	DRAWN BY SGW	CHK'D BY MD	SALES KR	MATERIAL NOTED
REVISION BY SGW	DATE 8/26/2020	DATE 5/24/2010	DATE 8/26/2020	DATE 5/23/2010	SHEET 1 OF 2