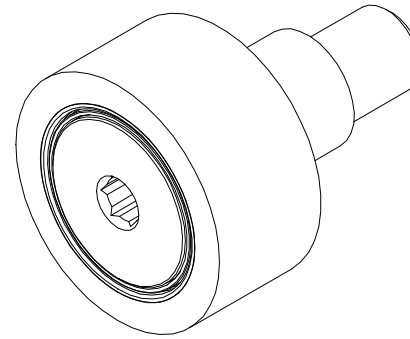


RECOMMENDED MOUNTING HOLE Ø		
Limit	Inch	mm
MIN	.689	17.5006
MAX	.691	17.5514

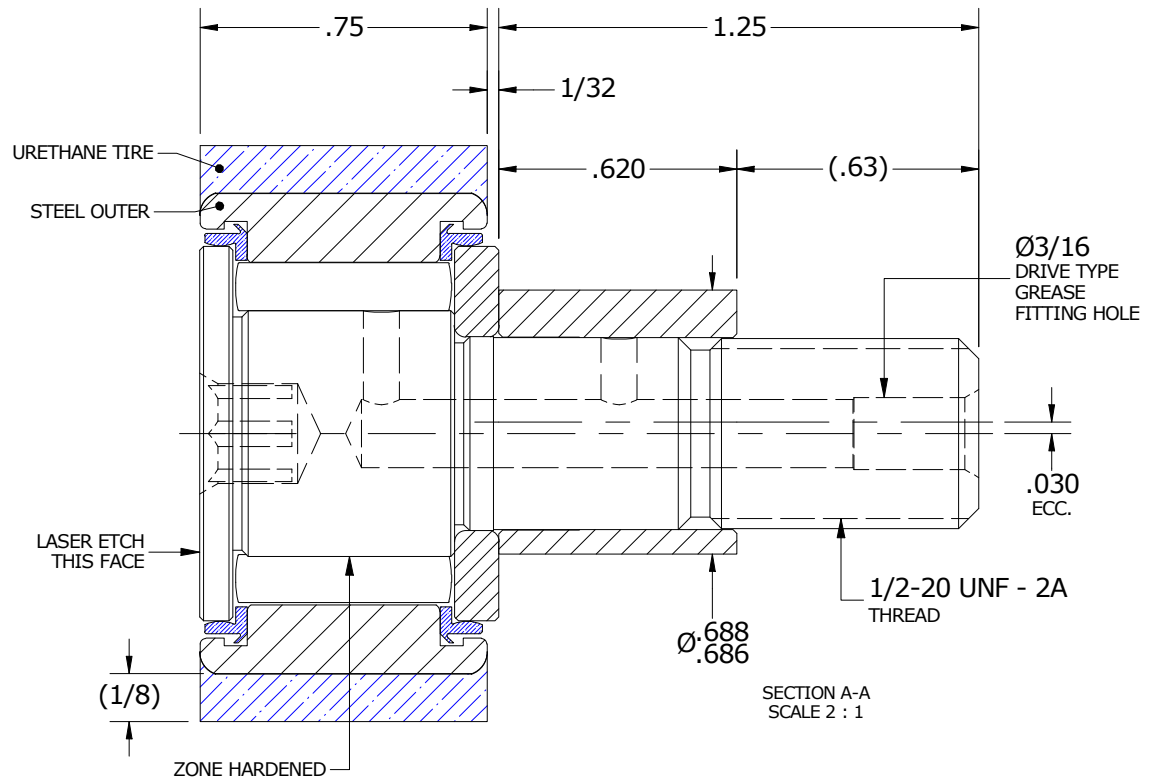
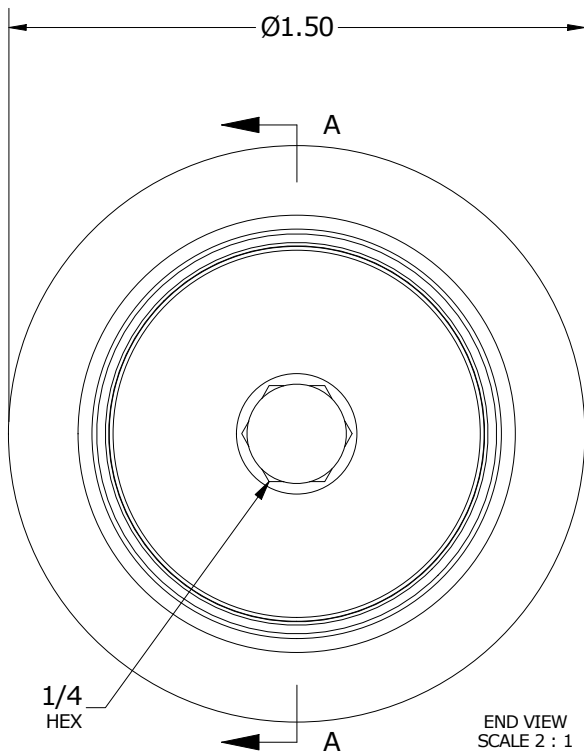
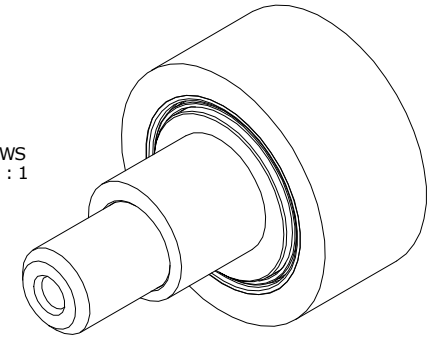
MAXIMUM CLAMPING TORQUE**		
Thread Type	Inch Lbs	Nm
LUBRICATED	175	20

- NOTES:
1. BEARING IS PACKED WITH NLGI GRADE 2, LITHIUM BASED GREASE UNLESS OTHERWISE SPECIFIED
 2. URETHANE SPECIFICATIONS:
 - A. DUROMETER = 80 SHORE A
 - B. COLOR = BLUE
 3. ALL EXPOSED STEEL SURFACES HAVE BLACK OXIDE
 4. CUSTOM LASER ETCHING AVAILABLE UPON REQUEST

MS NO. _____ NSN NO. _____ DRAWING NO. _____



ISO VIEWS
SCALE 1 : 1



**TORQUE SPECIFICATION IS BASED ON LUBRICATED THREADS, IF USING DRY THREADS DOUBLE TORQUE VALUE

MATERIAL NOTES:

- OUTER RING - BEARING STEEL, HEAT TREATED
- TIRE - URETHANE
- STUD - BEARING STEEL, ZONE HARDENED
- NEEDLE ROLLER(S) - BEARING STEEL, HEAT TREATED
- WASHER - BEARING STEEL, HEAT TREATED
- SEAL(S) - SYNTHETIC
- ECCENTRIC SLEEVE - STEEL

CUSTOMER PART# _____
 XX = ± .01
 XXX = ± .005
 XXXX = ± .0005
 ANGLES = ± 1'
 INCH [METRIC]
 FRACTION = ± 1/32

CARTER MANUFACTURING IS
NOT RESPONSIBLE FOR
TYPOGRAPHICAL ERRORS

CARTER MANUFACTURING CO., INC.
 GRAND HAVEN, MICHIGAN 49417

ENGINEERING CHANGE ORDER NOTE

REVISION		PART NAME: ASSEMBLY			PRODUCT TYPE: CRT	
B	AUTHOR BY HG	DRAWN BY SGW	CHK'D BY MD	SALES NC	MATERIAL NOTED	
REVISION BY SGW	DATE 8/26/2020	DATE 10/9/2007	DATE 8/26/2020	DATE 8/26/2020	SHEET 1 OF 2	