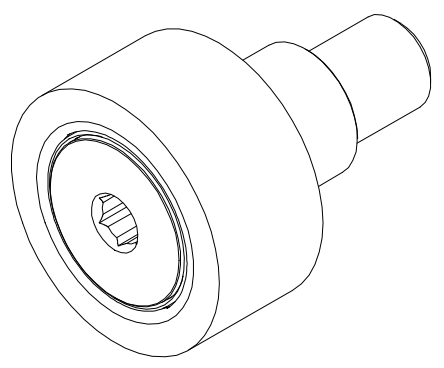


RECOMMENDED MOUNTING HOLE Ø		
Limit	Inch	mm
MIN	.877	22.2758
MAX	.879	22.3266

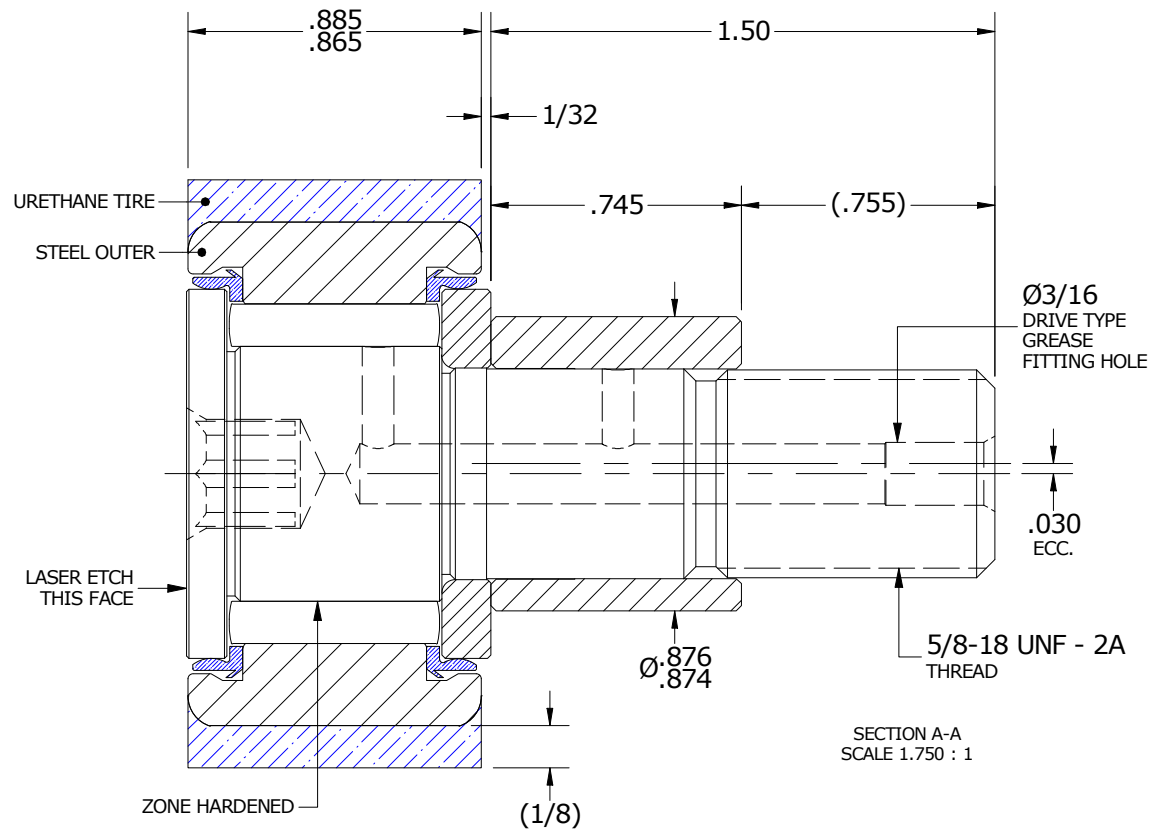
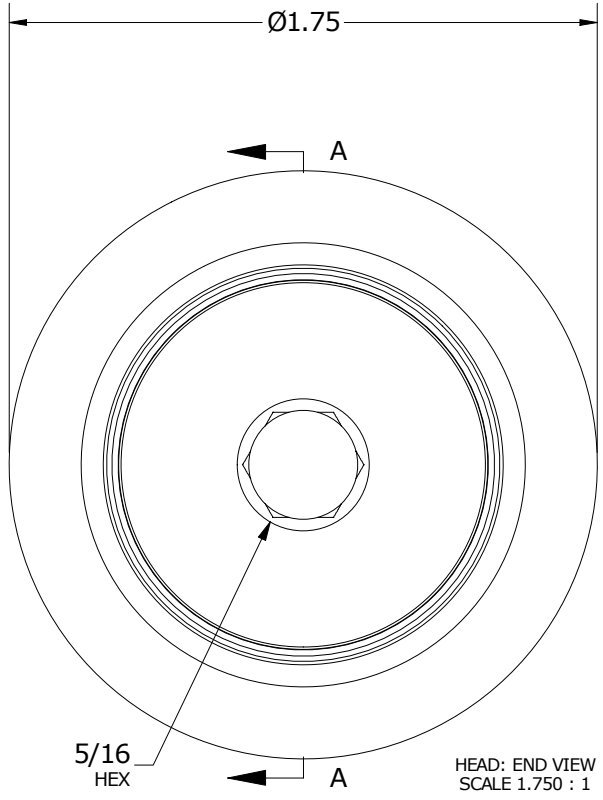
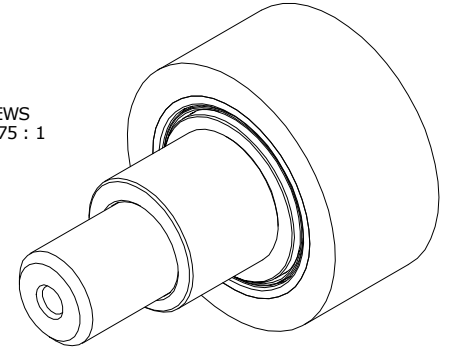
MAXIMUM CLAMPING TORQUE**		
Thread Type	Inch Lbs	Nm
LUBRICATED	325	36.5

- NOTES:
1. BEARING IS PACKED WITH NLGI GRADE 2, LITHIUM BASED GREASE UNLESS OTHERWISE SPECIFIED
 2. URETHANE SPECIFICATIONS:
 - A. DUROMETER = 80 SHORE A
 - B. COLOR = BLUE
 3. ALL EXPOSED STEEL SURFACES HAVE BLACK OXIDE
 4. CUSTOM LASER ETCHING AVAILABLE UPON REQUEST

MS NO. _____ NSN NO. _____ DRAWING NO. CRTE-56-SB



ISO VIEWS
SCALE .875 : 1



**TORQUE SPECIFICATION IS BASED ON LUBRICATED THREADS, IF USING DRY THREADS DOUBLE TORQUE VALUE

MATERIAL NOTES:

OUTER RING - BEARING STEEL, HEAT TREATED
 TIRE - URETHANE
 STUD - BEARING STEEL, ZONE HARDENED
 NEEDLE ROLLER(S) - BEARING STEEL, HEAT TREATED
 WASHER - BEARING STEEL, HEAT TREATED
 SEAL(S) - SYNTHETIC
 ECCENTRIC SLEEVE - STEEL

CUSTOMER PART#	XX = ± .01 XXX = ± .005 XXXX = ± .0005 ANGLES = ± 1' INCH [METRIC] FRACTION = ± 1/32
ENGINEERING CHANGE ORDER NOTE	

CARTER MANUFACTURING IS NOT RESPONSIBLE FOR TYPOGRAPHICAL ERRORS	
REVISION	
B	AUTHOR BY HG
REVISION BY SGW	DATE 8/26/2020

CARTER MANUFACTURING CO., INC. GRAND HAVEN, MICHIGAN 49417			
PART NAME: Assembly		PRODUCT TYPE: CRT	
DRAWN BY SGW	CHK'D BY MD	SALES KPR	MATERIAL NOTED
DATE 3/14/2017	DATE 8/26/2020	DATE 12/18/2008	SHEET 1 OF 2