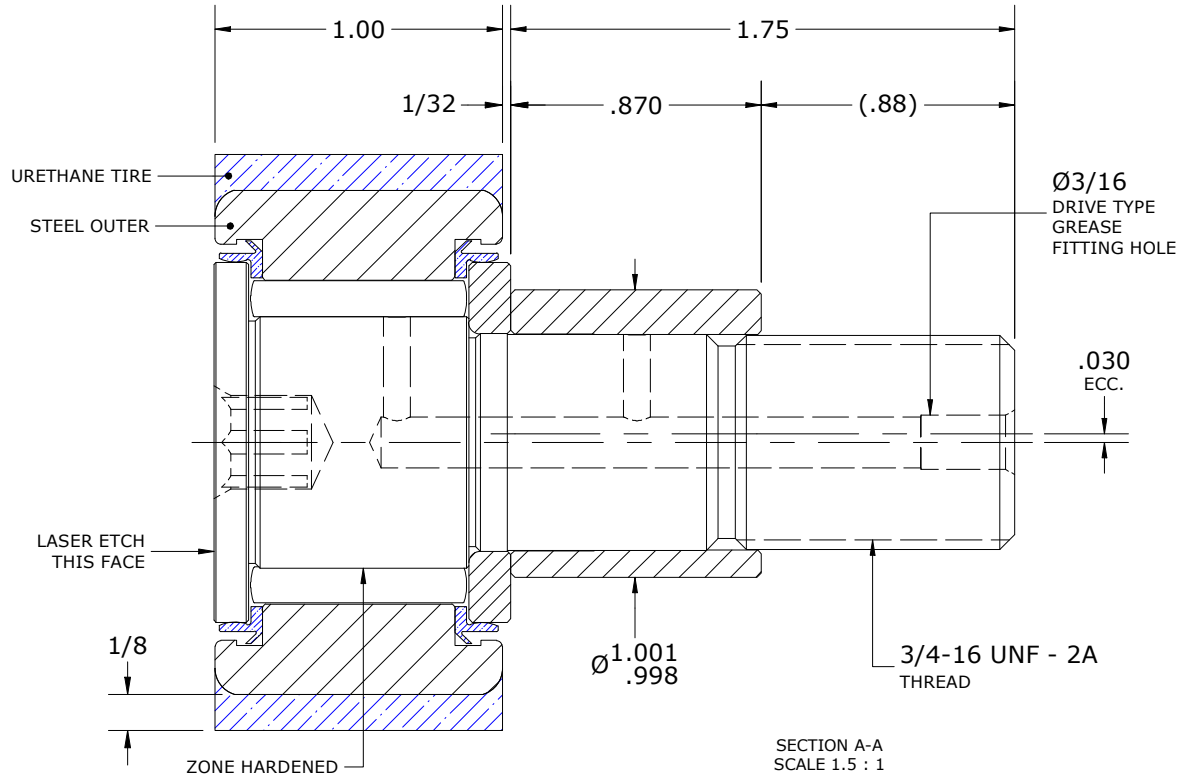
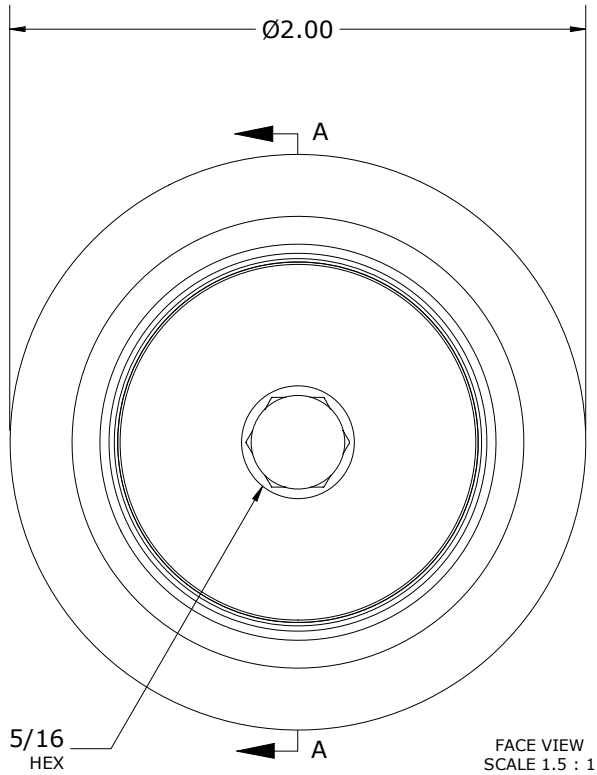
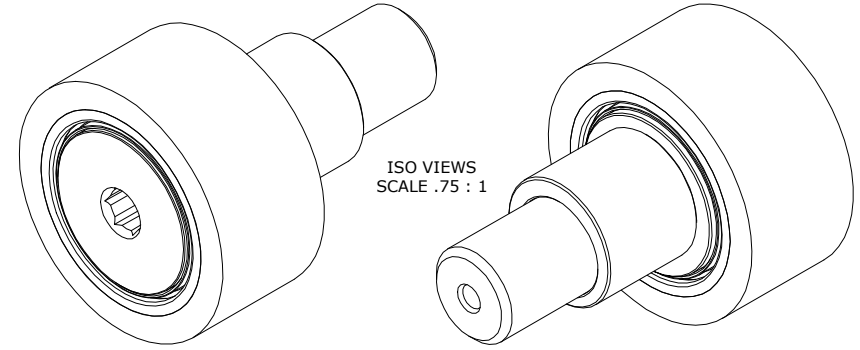


| RECOMMENDED MOUNTING HOLE Ø | | |
|-----------------------------|-------|---------|
| Limit | Inch | mm |
| MIN | 1.002 | 25.4508 |
| MAX | 1.004 | 25.5016 |

| MAXIMUM CLAMPING TORQUE** | | |
|---------------------------|----------|------|
| Thread Type | Inch lbf | Nm |
| LUBRICATED | 625 | 70.6 |

NOTES:

1. BEARING IS PACKED WITH NLGI GRADE 2, LITHIUM BASED GREASE (UNLESS OTHERWISE SPECIFIED)
2. URETHANE SPECIFICATIONS:
 - A. DUROMETER = 80 SHORE A
 - B. COLOR = BLUE
3. ALL EXPOSED STEEL SURFACES HAVE BLACK OXIDE
4. CUSTOM LASER ETCHING AVAILABLE UPON REQUEST



** (TORQUE SPECIFICATION IS BASED ON LUBRICATED THREADS, IF USING DRY THREADS DOUBLE TORQUE VALUE)

| | |
|--------------------------|--|
| MATERIAL NOTES: | OUTER RING - BEARING STEEL, HEAT TREATED |
| | STUD - BEARING STEEL, ZONE HARDENED |
| | NEEDLE ROLLER(S) - BEARING STEEL, HEAT TREATED |
| | WASHER - BEARING STEEL, HEAT TREATED |
| SEAL(S) - SYNTHETIC | |
| ECCENTRIC SLEEVE - STEEL | |
| TIRE - URETHANE | |

| | |
|--|---|
| CUSTOMER PART# | XX = ± .01 XXX = ± .005 XXXX = ± .0005 ANGLES = ± 2' INCH [METRIC] FRACTION = ± 1/64 |
| ENGINEERING CHANGE ORDER NOTE | |
| CARTER STANDARD SURFACE FINISH IS MEASURED IN "Ra" UNITS UNLESS OTHERWISE SPECIFIED. | |

| | |
|--|-----------|
| CARTER MANUFACTURING IS NOT RESPONSIBLE FOR TYPOGRAPHICAL ERRORS | |
| REVISION | |
| C | AUTHOR BY |
| REVISION BY | DATE |
| DJB | |

| | | | |
|--|----------|------------------------------|----------|
| CARTER MANUFACTURING CO., INC. GRAND HAVEN, MICHIGAN 49417 | | | |
| PART NAME: ASSEMBLY | | PRODUCT TYPE: Standard CF/YR | |
| DRAWN BY | CHK'D BY | SALES | MATERIAL |
| SGW | | | NOTED |
| DATE | DATE | DATE | SHEET |
| 2/28/2014 | | | 1 OF 2 |