

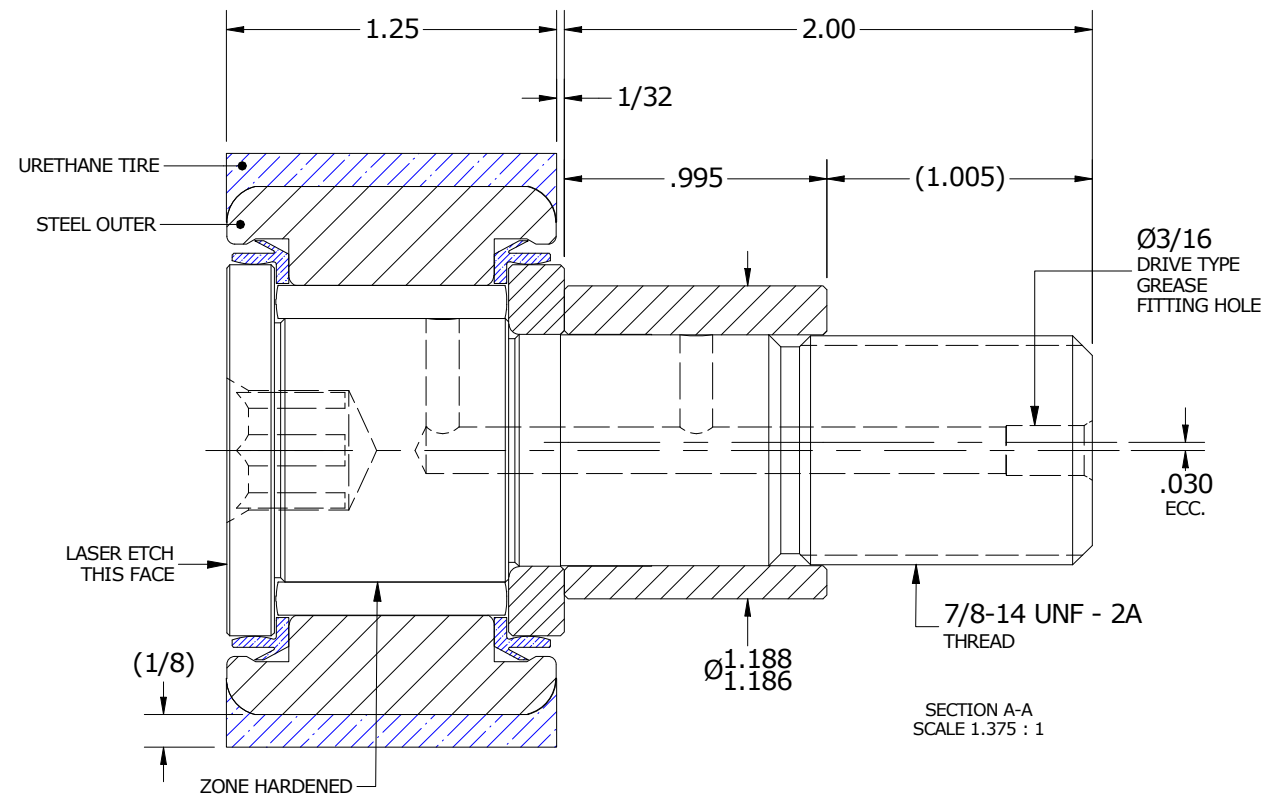
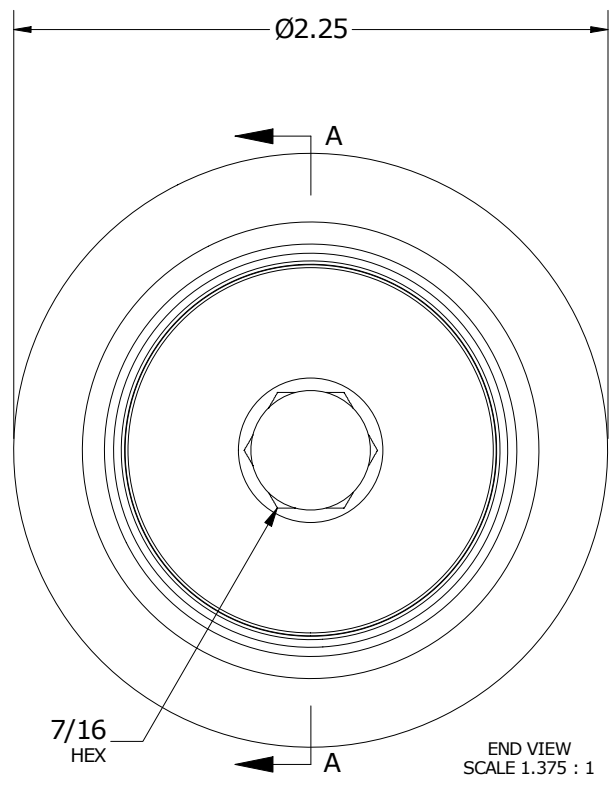
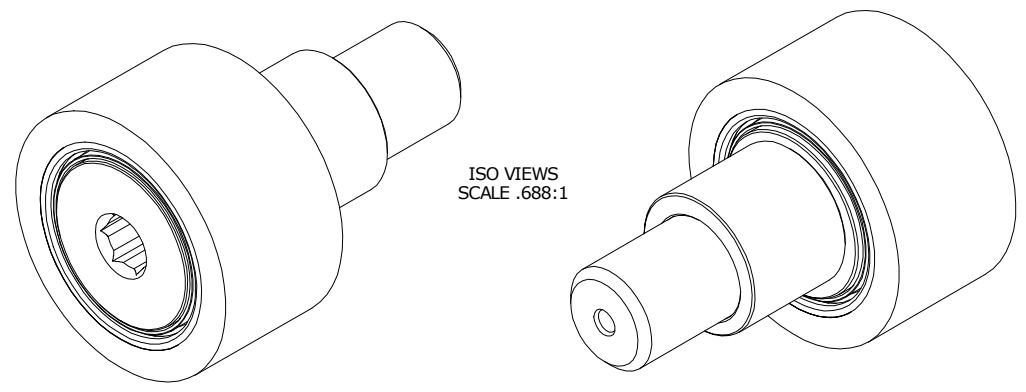
RECOMMENDED MOUNTING HOLE Ø		
Limit	Inch	mm
MIN	1.189	30.2006
MAX	1.191	30.2514

MAXIMUM CLAMPING TORQUE**		
Thread Type	Inch Lbs	Nm
LUBRICATED	750	84.7

- NOTES:
1. BEARING IS PACKED WITH NLGI GRADE 2, LITHIUM BASED GREASE UNLESS OTHERWISE SPECIFIED
  2. URETHANE SPECIFICATIONS:
    - A. DUROMETER = 80 SHORE A
    - B. COLOR = BLUE
  3. ALL EXPOSED STEEL SURFACES HAVE BLACK OXIDE
  4. CUSTOM LASER ETCHING AVAILABLE UPON REQUEST

MS NO. \_\_\_\_\_ NSN NO. \_\_\_\_\_ DRAWING NO. CRTE-72-SB



\*\*TORQUE SPECIFICATION IS BASED ON LUBRICATED THREADS, IF USING DRY THREADS DOUBLE TORQUE VALUE

**MATERIAL NOTES:**  
 OUTER RING - BEARING STEEL, HEAT TREATED  
 TIRE - URETHANE  
 STUD - BEARING STEEL, ZONE HARDENED  
 NEEDLE ROLLER(S) - BEARING STEEL, HEAT TREATED  
 WASHER - BEARING STEEL, HEAT TREATED  
 SEAL(S) - SYNTHETIC  
 ECCENTRIC SLEEVE - STEEL

CUSTOMER PART#	XX = ± .01 XXX = ± .005 XXXX = ± .0005 ANGLES = ± 1' INCH [METRIC] FRACTION = ± 1/32
ENGINEERING CHANGE ORDER NOTE	

CARTER MANUFACTURING IS NOT RESPONSIBLE FOR TYPOGRAPHICAL ERRORS				<b>CARTER MANUFACTURING CO., INC.</b> GRAND HAVEN, MICHIGAN 49417			
REVISION		PART NAME: ASSEMBLY		PRODUCT TYPE: CRT			
<b>C</b>	AUTHOR BY HG	DRAWN BY SGW	CHK'D BY MD	SALES KR	MATERIAL NOTED		
REVISION BY SGW	DATE 8/26/2020	DATE 11/18/2013	DATE 8/26/2020	DATE 7/20/2018	SHEET 1 OF 2		