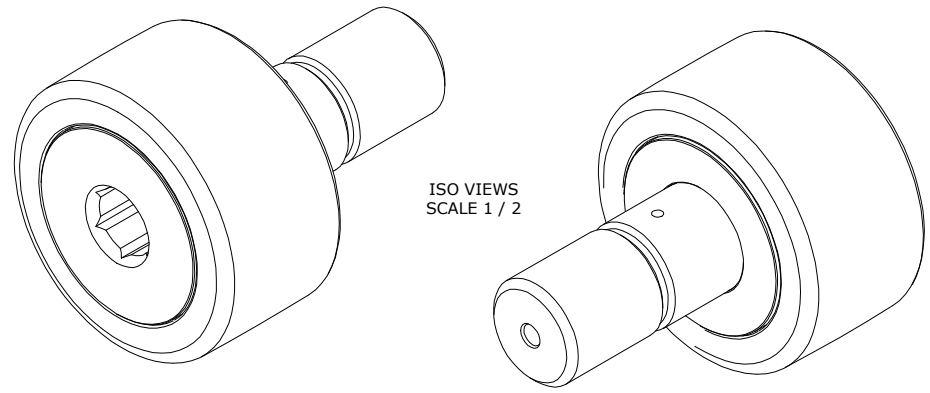


RECOMMENDED MOUNTING HOLE Ø		
Limit	Inch	mm
MIN	1.2500	31.7500
MAX	1.2505	31.7627

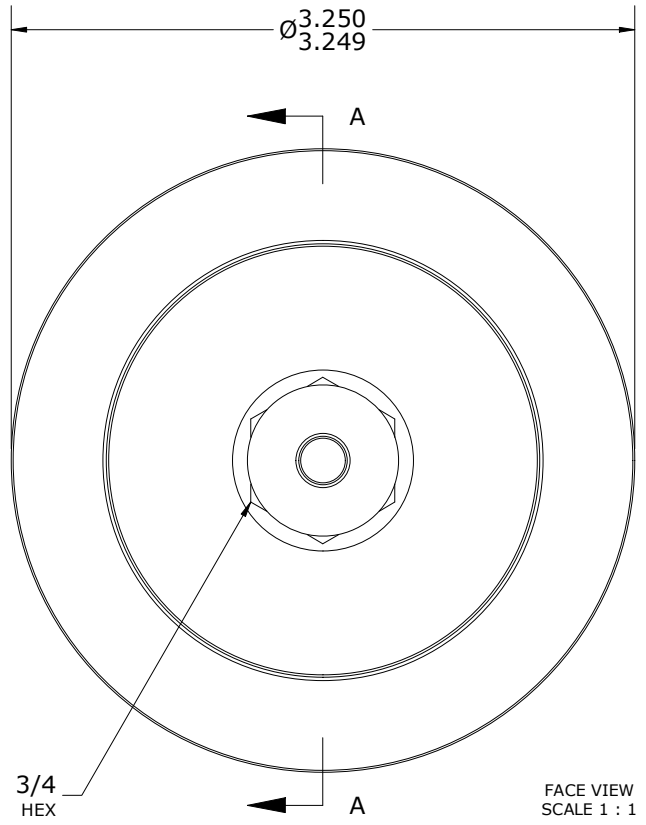
MAXIMUM CLAMPING TORQUE**		
Thread Type	Inch lbf	Nm
LUBRICATED	1,725	195

- NOTES:
- BUSHING IS IMPREGNATED WITH CARTER STANDARD NEVERLUBE LUBRICANT
 - ALL EXPOSED SURFACES HAVE BLACK OXIDE
 - CUSTOM LASER ETCHING IS AVAILABLE UPON REQUEST

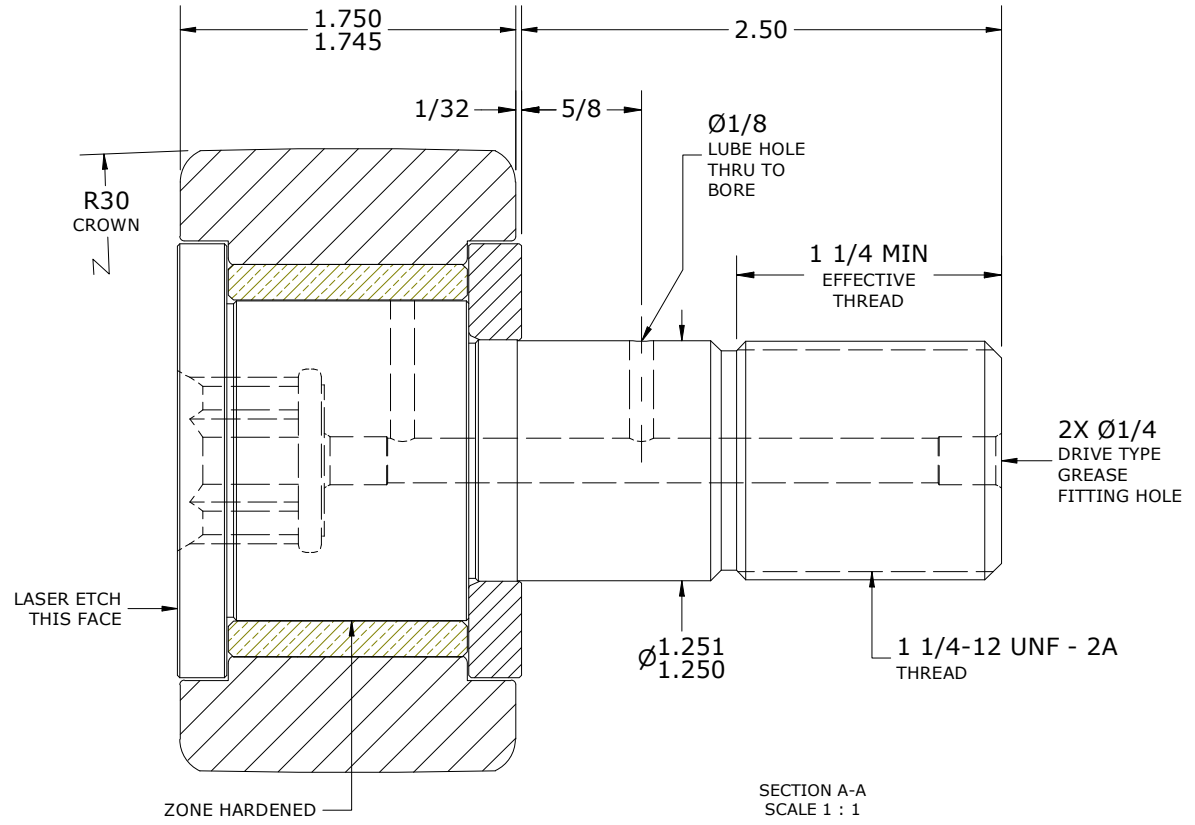
DRAWING NO. CSFH-104-B



ISO VIEWS
SCALE 1 / 2



FACE VIEW
SCALE 1 : 1



SECTION A-A
SCALE 1 : 1

**TORQUE SPECIFICATION IS BASED ON LUBRICATED THREADS, IF USING DRY THREADS DOUBLE TORQUE VALUE

MATERIAL NOTES:

OUTER RING - BEARING STEEL, HEAT TREATED

STUD - BEARING STEEL, ZONE HARDENED

WASHER - STEEL, HEAT TREATED

BUSHING - SINTERED BRONZE

CUSTOMER PART#	XX = ± .01 XXX = ± .005 XXXX = ± .0005 ANGLES = ± 2' INCH [METRIC] FRACTION = ± 1/64
ENGINEERING CHANGE ORDER NOTE	
CARTER STANDARD SURFACE FINISH IS MEASURED IN "Ra" UNITS UNLESS OTHERWISE SPECIFIED.	

CARTER MANUFACTURING IS NOT RESPONSIBLE FOR TYPOGRAPHICAL ERRORS				CARTER MANUFACTURING CO., INC. GRAND HAVEN, MICHIGAN 49417			
REVISION				PART NAME: ASSEMBLY		PRODUCT TYPE: CSFH, Standard CF/YR	
A	AUTHOR BY HG	DRAWN BY DJB	CHK'D BY MD	SALES NC	MATERIAL NOTED		
REVISION BY DJB	DATE 3/1/2024	DATE 2/27/2024	DATE 3/1/2024	DATE 3/1/2024	SHEET 1 OF 2		