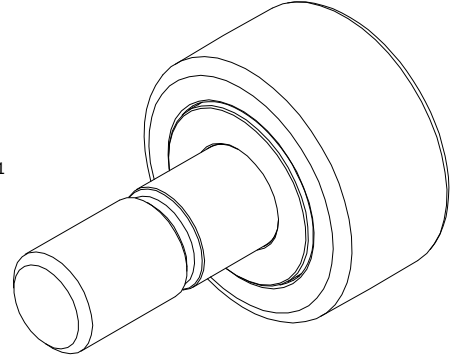
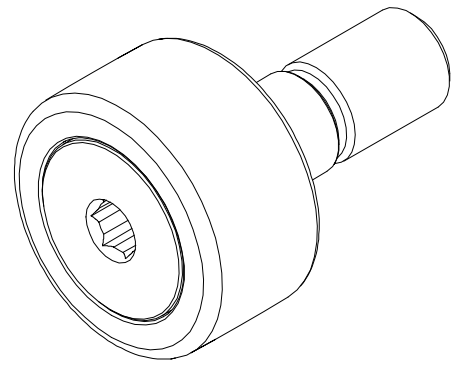


RECOMMENDED MOUNTING HOLE Ø		
Limit	Inch	mm
MIN	.6250	15.8750
MAX	.6255	15.8877

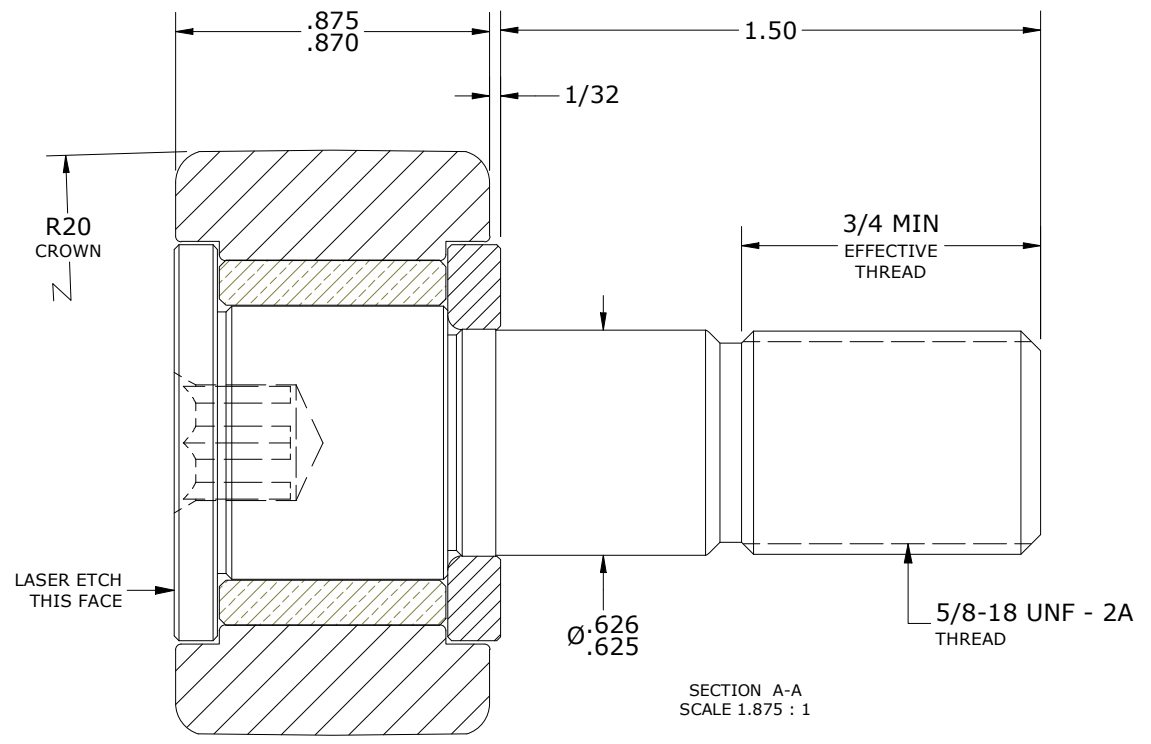
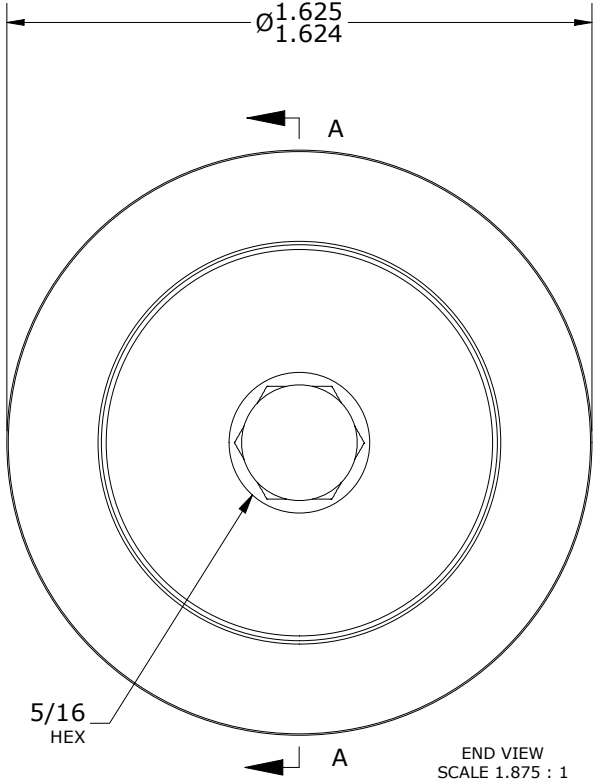
NOTES:
 1. BUSHING IS IMPREGNATED WITH CARTER STANDARD NEVERLUBE LUBRICANT.
 2. ALL EXPOSED SURFACES HAVE BLACK OXIDE.
 3. CUSTOM LASER ETCHING IS AVAILABLE UPON REQUEST.

MS NO. _____ NSN NO. _____ DRAWING NO. CSFH-52-A

MAXIMUM CLAMPING TORQUE**	
Inch lbf	Nm
325	36.5



ISO VIEWS
SCALE .938 : 1



**TORQUE SPECIFICATION IS BASED ON LUBRICATED THREADS, IF USING DRY THREADS DOUBLE TORQUE VALUE.

MATERIAL NOTES:
 OUTER RING - BEARING STEEL, HEAT TREATED
 STUD - STEEL
 BUSHING - SINTERED BRONZE
 WASHER - BEARING STEEL, HEAT TREATED

CUSTOMER PART#	XX = ± .01 XXX = ± .005 XXXX = ± .0005 ANGLES = ± 1' INCH [METRIC] FRACTION = ± 1/32
ENGINEERING CHANGE ORDER NOTE	

CARTER MANUFACTURING IS NOT RESPONSIBLE FOR TYPOGRAPHICAL ERRORS				CARTER MANUFACTURING CO., INC. GRAND HAVEN, MICHIGAN 49417			
REVISION		PART NAME: ASSEMBLY			PRODUCT TYPE: CSFH		
A	AUTHOR BY HG	DRAWN BY SGW	CHK'D BY MD	SALES NC	MATERIAL NOTED		
REVISION BY SGW	DATE 6/23/2020	DATE 6/10/2020	DATE 6/22/2020	DATE 6/23/2020	SHEET 1 OF 2		