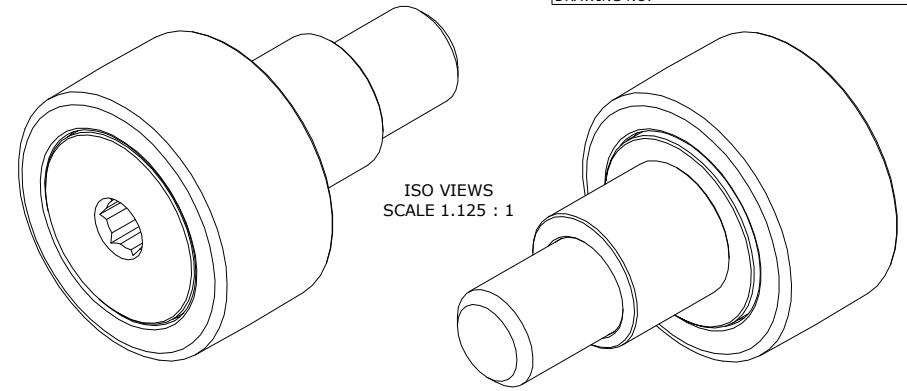


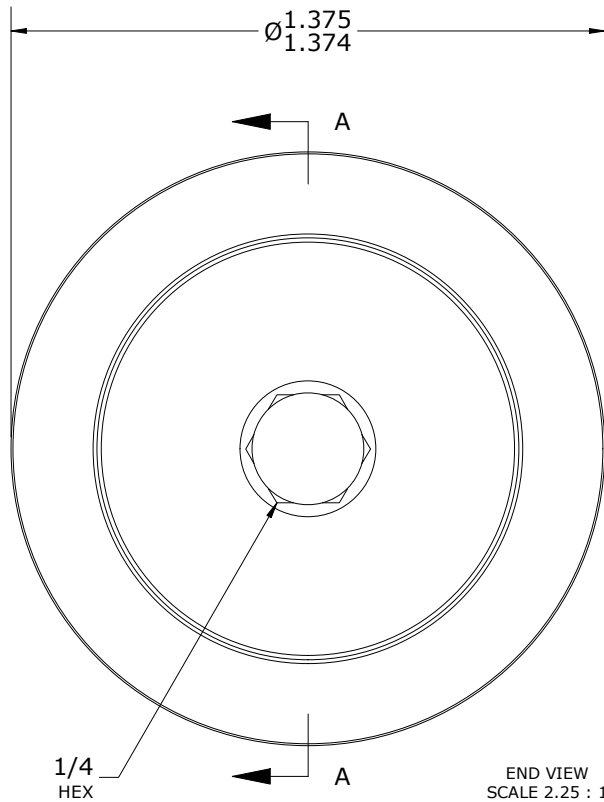
- NOTES:  
 1. BUSHING IS IMPREGNATED WITH OIL  
 2. ALL EXPOSED SURFACES HAVE BLACK OXIDE

DRAWING NO.

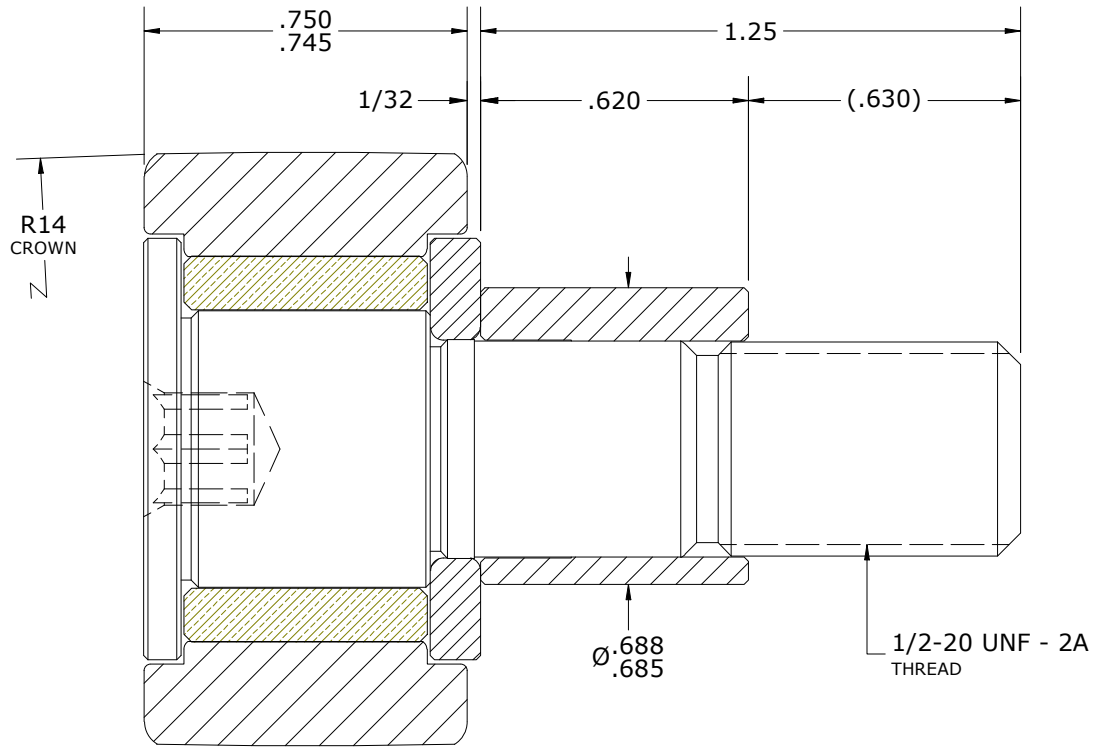
CSFHE-44-A



ISO VIEWS  
 SCALE 1.125 : 1



END VIEW  
 SCALE 2.25 : 1



SECTION A-A  
 SCALE 2.25 : 1

MATERIAL NOTES:

- OUTER RING - BEARING STEEL, HEAT TREATED
- STUD - STEEL
- WASHER - BEARING STEEL, HEAT TREATED
- BUSHING - SINTERED BRONZE
- ECCENTRIC SLEEVE - STEEL

CUSTOMER PART#

XX = ± .01  
 XXX = ± .005  
 XXXX = ± .0005  
 ANGLES = ± 2'  
 INCH [METRIC]  
 FRACTION = ± 1/64

CARTER MANUFACTURING IS NOT RESPONSIBLE FOR TYPOGRAPHICAL ERRORS

**CARTER MANUFACTURING CO., INC.**

GRAND HAVEN, MICHIGAN 49417

ENGINEERING CHANGE ORDER NOTE

REVISION

PART NAME: ASSEMBLY

PRODUCT TYPE: Neverlube™

B

AUTHOR BY

DRAWN BY

CHK'D BY

SALES

MATERIAL

HG

MD

MD

NC

NOTED

CARTER STANDARD SURFACE FINISH IS MEASURED IN "Ra" UNITS UNLESS OTHERWISE SPECIFIED.

REVISION BY

DATE

DATE

DATE

DATE

SHEET

DJB

1/11/2024

11/28/2018

1/11/2024

11/29/2018

1 OF 2