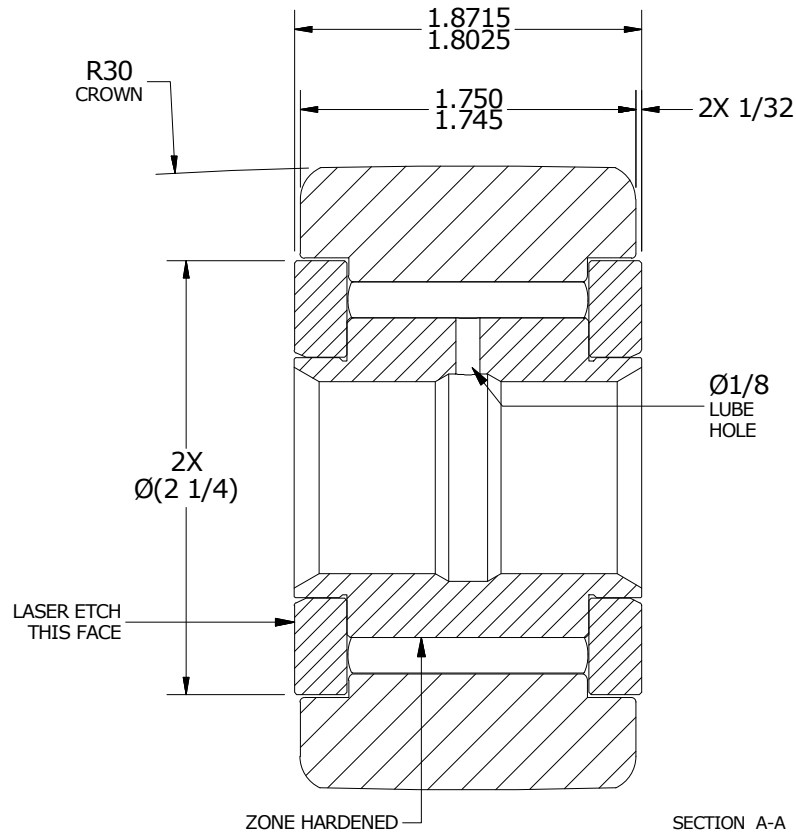
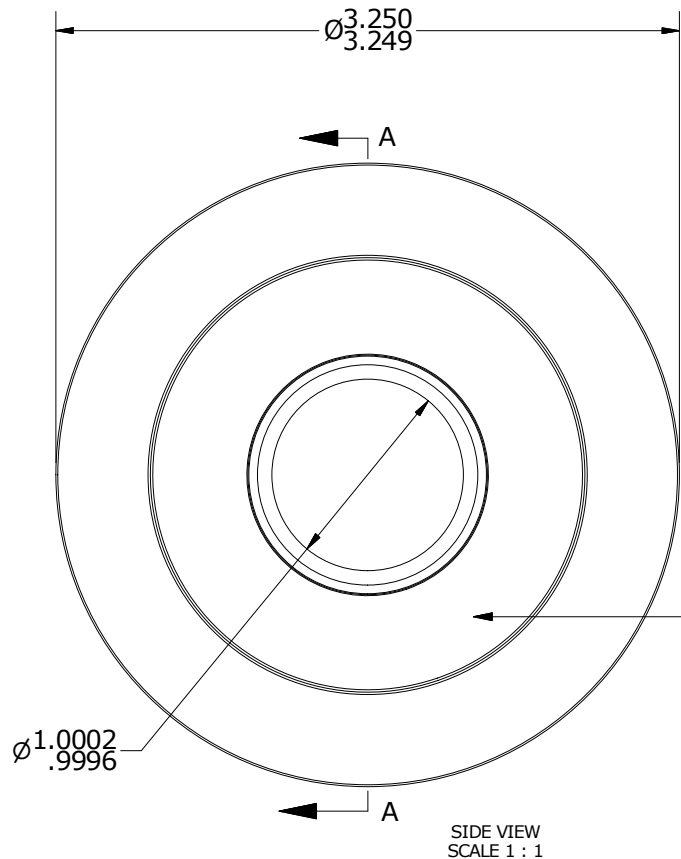
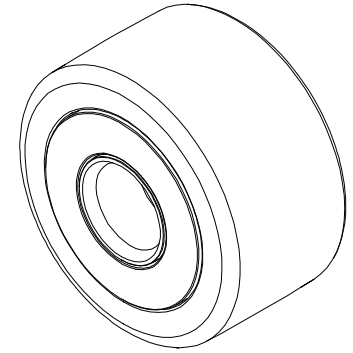


LOAD RATINGS		
RATING	lbf	Newtons
RADIAL BASIC DYNAMIC	15,720	69,926
MAXIMUM STATIC CAPACITY	49,820	221,610

- NOTES:
1. BEARING IS PACKED WITH NLGI GRADE 2, LITHIUM BASED GREASE (UNLESS OTHERWISE SPECIFIED)
 2. ALL EXPOSED SURFACES HAVE BLACK OXIDE
 3. CUSTOM LASER ETCHING IS AVAILABLE UPON REQUEST

ISO VIEW
SCALE 1 / 2



Recommended Shaft Fits		
Fit Type - Dimension	Ø (Inch)	Ø (mm)
Push - Max	.9996	25.3898
Push - Min	.9991	25.3771
Drive - Max	1.0004	25.4102
Drive - Min	.9997	25.3924
Press - Max	1.0008	25.4203
Press - Min	1.0003	25.4076

MATERIAL NOTES:

OUTER RING- BEARING STEEL, HEAT TREATED
 INNER RING- BEARING STEEL, ZONE HARDENED
 NEEDLE ROLLER(S) - BEARING STEEL, HEAT TREATED
 WASHER(S) - STEEL, HEAT TREATED

CUSTOMER PART#

XX = ± .01
 XXX = ± .005
 XXXX = ± .0005
 ANGLES = ± 1'
 INCH [METRIC]
 FRACTION = ± 1/32

CARTER MANUFACTURING IS NOT RESPONSIBLE FOR TYPOGRAPHICAL ERRORS

CARTER MANUFACTURING CO., INC.

GRAND HAVEN, MICHIGAN 49417

ENGINEERING CHANGE ORDER NOTE

REVISION

PART NAME: ASSEMBLY

PRODUCT TYPE: YNB

A

AUTHOR BY
HG

DRAWN BY
SGW

CHK'D BY
MD

SALES
NC

MATERIAL
NOTED

REVISION BY
SGW

DATE
4/16/2019

DATE
4/16/2019

DATE
4/16/2019

DATE
4/16/2019

SHEET
1 OF 2