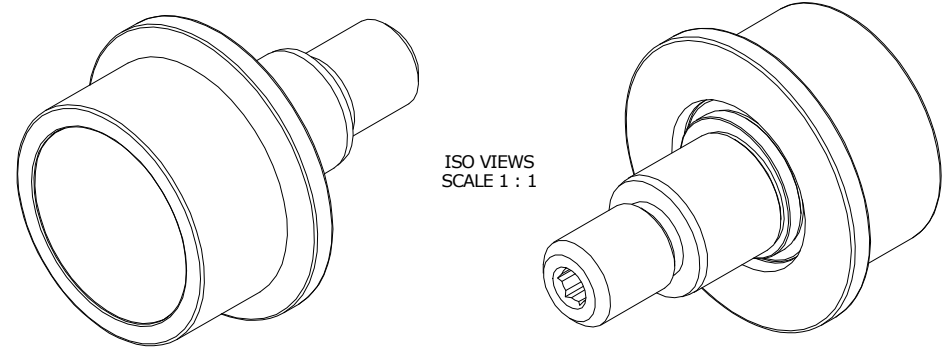


LOAD RATINGS	
RATING	Lbs
RADIAL BASIC DYNAMIC	1,350
STATIC THRUST LOAD	370
MAXIMUM STATIC CAPACITY	600

- NOTES:
 1. BALL BEARING COMES PRE-PACKED WITH GREASE
 2. ALL EXPOSED SURFACES HAVE BLACK OXIDE
 3. CUSTOM LASER ETCHING UPON REQUEST

MS NO. _____ NSN NO. _____ DRAWING NO. FHRE-137-A

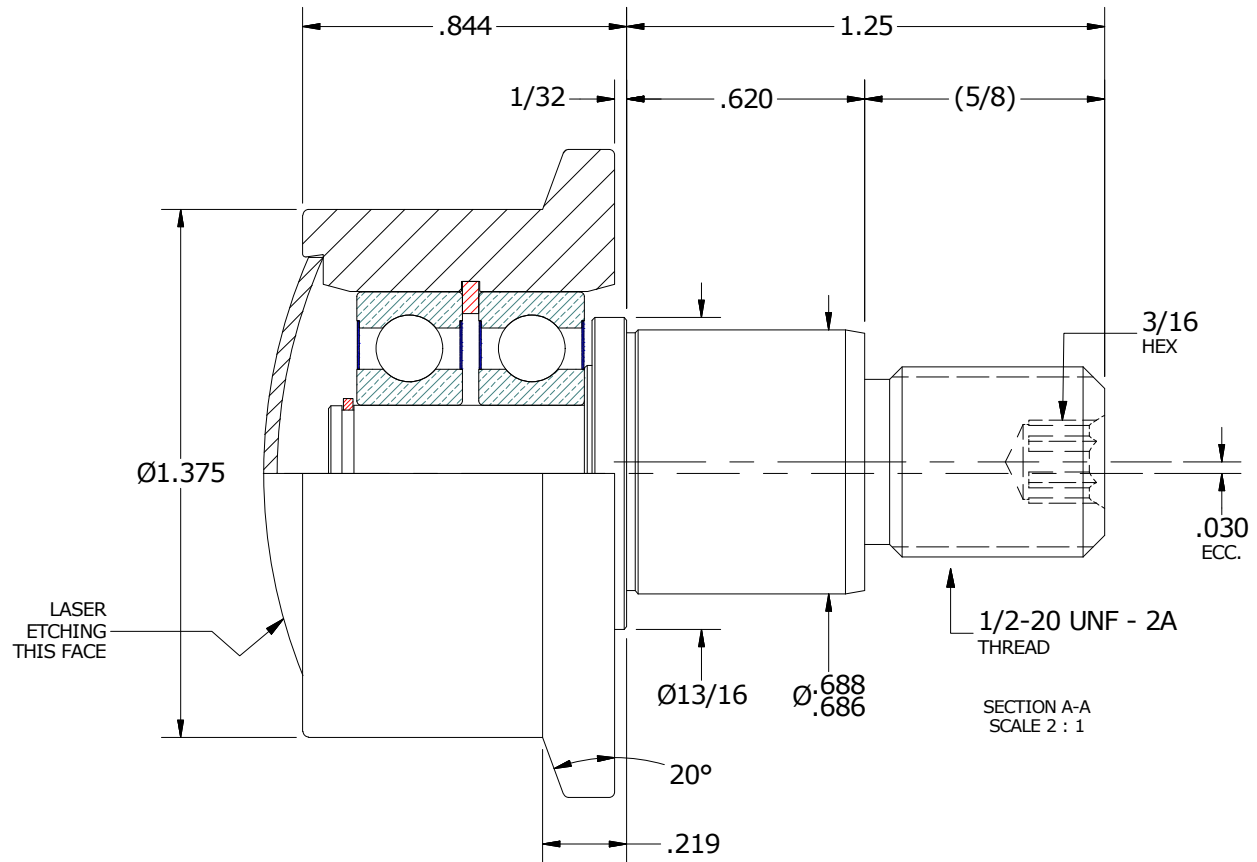
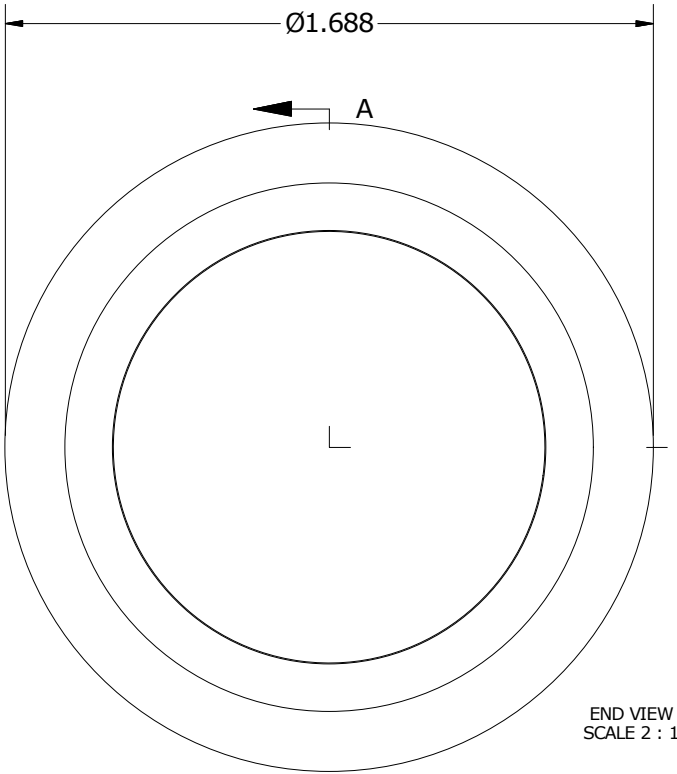


ISO VIEWS
SCALE 1 : 1

SIGNED DRAWING APPROVAL REQUIRED

PLEASE REVIEW AND VERIFY INFORMATION ON ALL SHEETS & RETURN COPY WITH SIGNED AND DATED APPROVAL, AND/OR REQUIRED CHANGES. CARTER WILL NOT PROCEED WITH ORDER UNTIL APPROVAL IS RECEIVED

SIGNED _____ DATE _____ APPROVED REJECTED



MATERIAL NOTES:

OUTER ROLLER HOUSING- BEARING STEEL, HEAT TREATED
 STUD - STEEL
 BEARING ASSY. - 609-2RS, [2] RQ'D
 RETAINING RINGS - SPRING STEEL
 END CAP - STEEL

CUSTOMER PART#	XX = ± .01 XXX = ± .005 XXXX = ± .0005 ANGLES = ± 1' INCH [METRIC] FRACTION = ± 1/32
ENGINEERING CHANGE ORDER NOTE	

CARTER MANUFACTURING IS NOT RESPONSIBLE FOR TYPOGRAPHICAL ERRORS		CARTER MANUFACTURING CO., INC. GRAND HAVEN, MICHIGAN 49417			
REVISION		PART NAME: ASSEMBLY		PRODUCT TYPE: FHR	
A	AUTHOR BY HG	DRAWN BY SGW	CHK'D BY MD	SALES NC	MATERIAL NOTED
REVISION BY SGW	DATE 2/11/2019	DATE 2/11/2019	DATE 2/11/2019	DATE 2/11/2019	SHEET 1 OF 2