

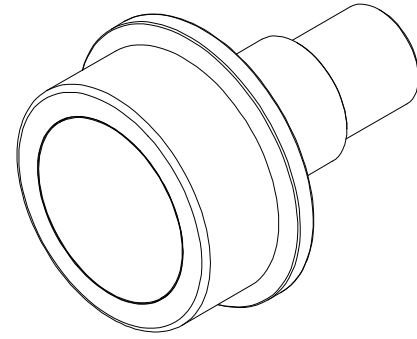
LOAD RATINGS	
RATING	Lbs
RADIAL BASIC DYNAMIC	35,800
DYNAMIC THRUST LOAD	14,200
MAXIMUM STATIC CAPACITY	62,000

- NOTES:
1. BEARING IS PACKED WITH NLGI GRADE 2, LITHIUM BASED GREASE (UNLESS OTHERWISE SPECIFIED).
 2. ALL EXPOSED SURFACES HAVE BLACK OXIDE.
 3. CUSTOM LASER ETCHING IS AVAILABLE UPON REQUEST.

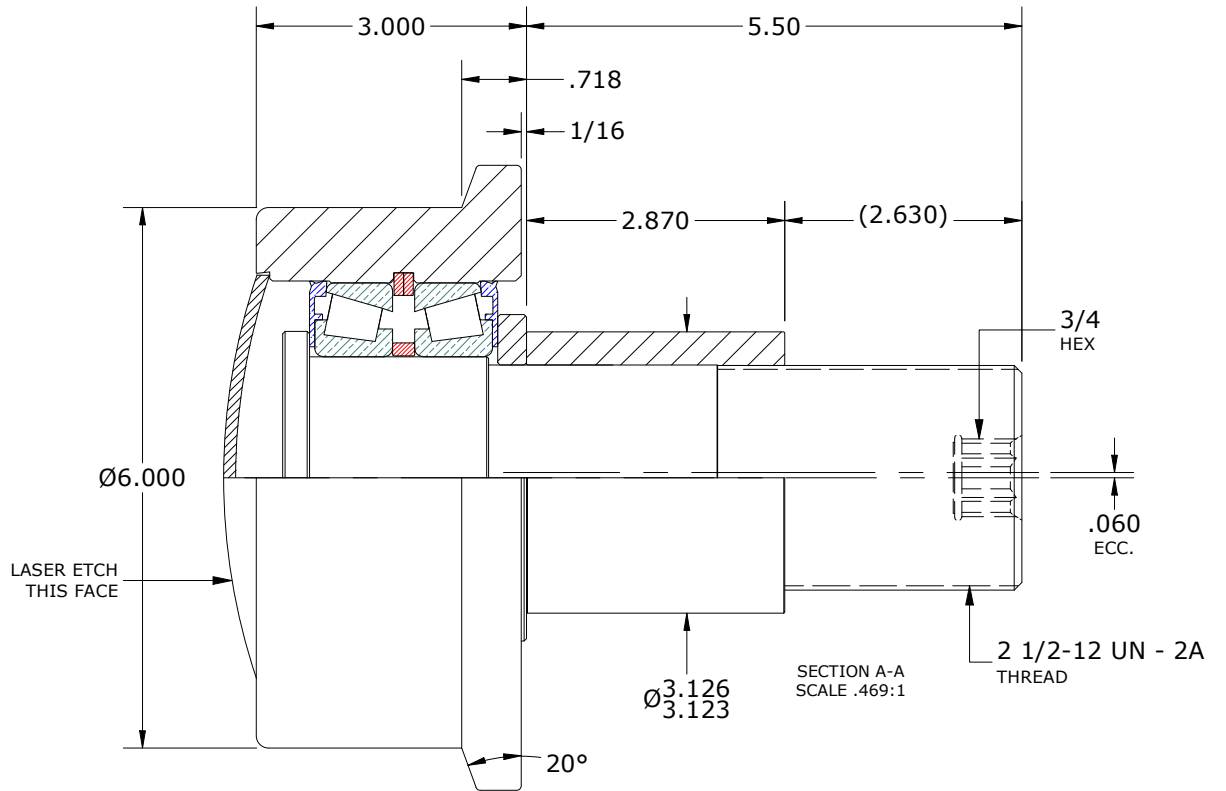
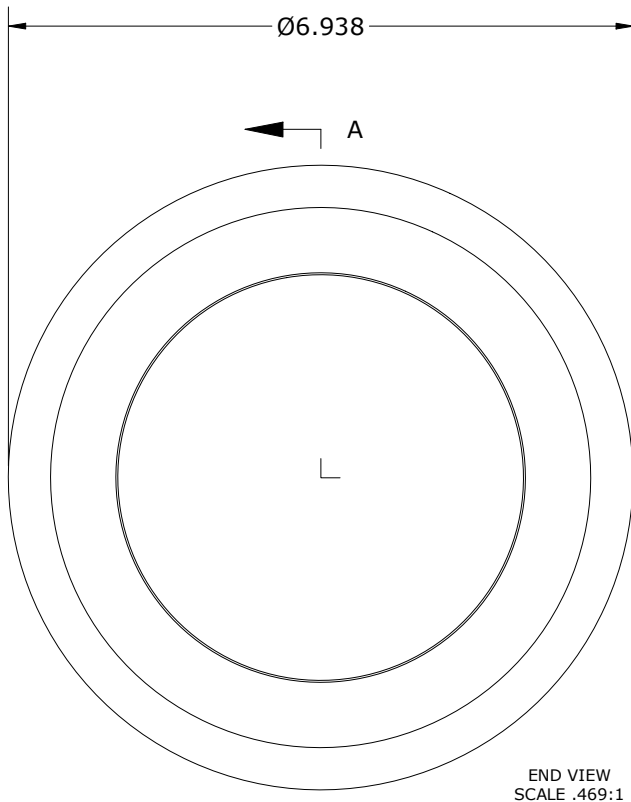
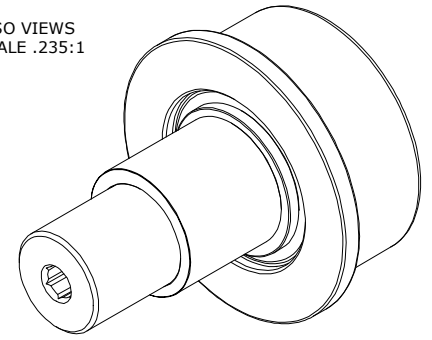
MS NO.	NSN NO.	DRAWING NO.	FHRE-600-A
--------	---------	-------------	------------

RECOMMENDED MOUNTING HOLE Ø		
Limit	Inch	mm
MIN	3.127	79.4258
MAX	3.128	79.4512

MAXIMUM CLAMPING TORQUE**		
Thread Type	ft lbs	Nm
LUBRICATED	50	68



ISO VIEWS
SCALE .235:1



**TORQUE SPECIFICATION IS BASED ON LUBRICATED THREADS, IF USING DRY THREADS DOUBLE TORQUE VALUE

MATERIAL NOTES:

- OUTER ROLLER HOUSING - BEARING STEEL, HEAT TREATED
- STUD - STEEL
- TAPERED SET - EQUIVALENT TO TIMKEN P/N: 395LA-90329
- WASHER - STEEL
- END CAP - STEEL
- ECCENTRIC SLEEVE - STEEL

CUSTOMER PART#

XX = ± .01
XXX = ± .005
XXXX = ± .0005
ANGLES = ± 1'
INCH [METRIC]
FRACTION = ± 1/32

CARTER MANUFACTURING IS NOT RESPONSIBLE FOR TYPOGRAPHICAL ERRORS

CARTER MANUFACTURING CO., INC.
GRAND HAVEN, MICHIGAN 49417

ENGINEERING CHANGE ORDER NOTE

REVISION

PART NAME: ASSEMBLY

PRODUCT TYPE: Hi-Roller™

A

AUTHOR BY
MD

DRAWN BY
SGW

CHK'D BY
MD

SALES
NC

MATERIAL
NOTED

REVISION BY
SGW

DATE
10/26/2021

DATE
10/26/2021

DATE
10/26/2021

DATE
10/26/2021

SHEET
1 OF 2