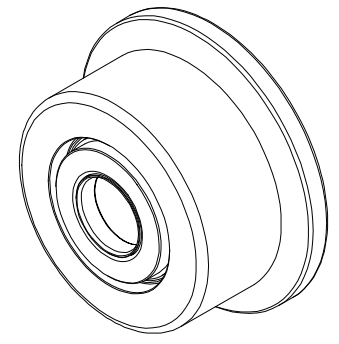
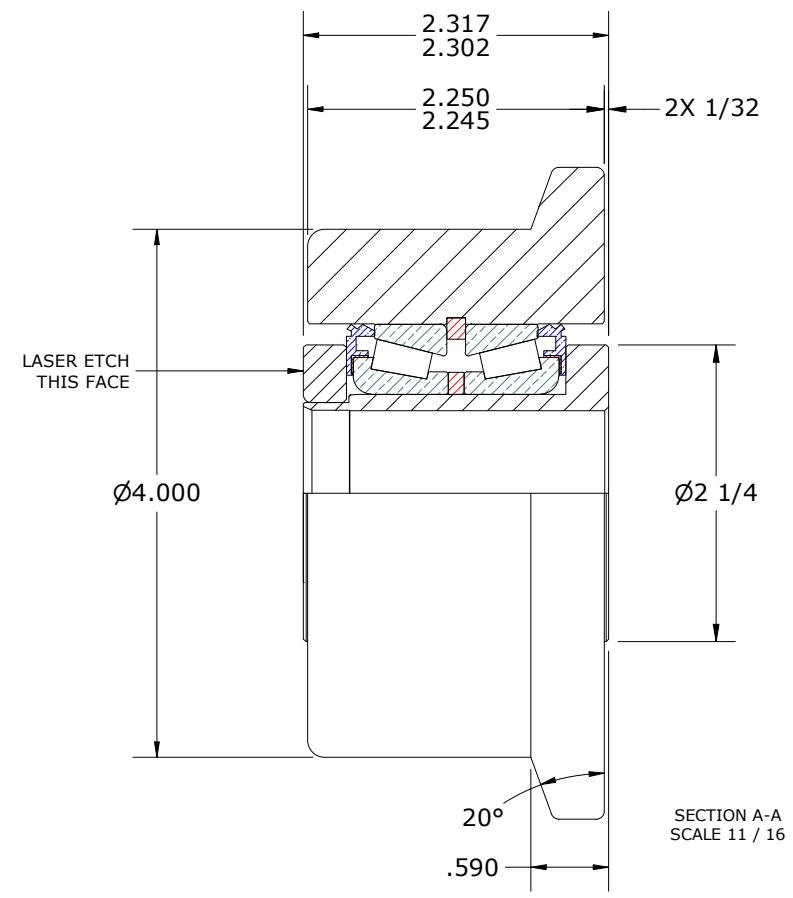
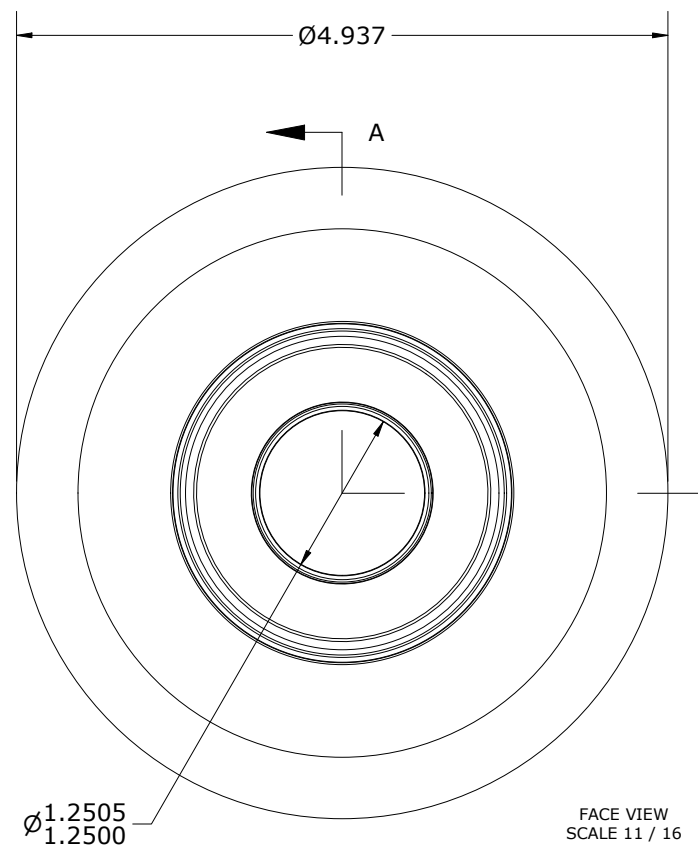
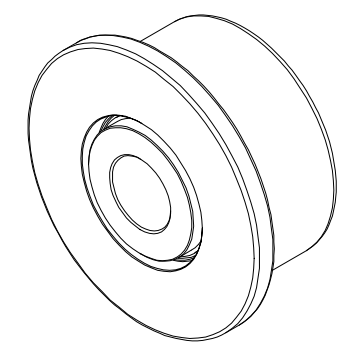


LOAD RATINGS		
RATING	lbf	Newtons
RADIAL BASIC DYNAMIC	17,590	78,244
STATIC THRUST LOAD	13,100	58,272
MAXIMUM STATIC CAPACITY	27,200	120,992

- NOTES:
1. BEARING IS PACKED WITH NLGI GRADE 2, LITHIUM BASED GREASE (UNLESS OTHERWISE SPECIFIED)
 2. ALL EXPOSED SURFACES HAVE BLACK OXIDE
 3. CUSTOM LASER ETCHING IS AVAILABLE UPON REQUEST



ISO VIEWS
SCALE 11 / 32



MATERIAL NOTES:
 OUTER ROLLER HOUSING - BEARING STEEL, HEAT TREATED
 STUD - STEEL
 TAPERED SET - EQUIVALENT TO TIMKEN NO. LM29700LA-902A2
 WASHER - STEEL

CUSTOMER PART#	XX = ± .01 XXX = ± .005 XXXX = ± .0005 ANGLES = ± 2' INCH [METRIC] FRACTION = ± 1/64
ENGINEERING CHANGE ORDER NOTE	
CARTER STANDARD SURFACE FINISH IS MEASURED IN "Ra" UNITS UNLESS OTHERWISE SPECIFIED.	

CARTER MANUFACTURING IS NOT RESPONSIBLE FOR TYPOGRAPHICAL ERRORS

REVISION	
A	AUTHOR BY HG
REVISION BY DJB	DATE 2/16/2026

CARTER MANUFACTURING CO., INC.
 GRAND HAVEN, MICHIGAN 49417

PART NAME: ASSEMBLY				PRODUCT TYPE: Hi-Rollers™	
DRAWN BY DJB	CHK'D BY MD	SALES NC	MATERIAL NOTED	DATE 2/16/2026	SHEET 1 OF 2