

LOAD RATINGS		
RATING	lbf	Newtons
RADIAL BASIC DYNAMIC [C]	3,400	15,124
STATIC THRUST LOAD	1,120	4,982
MAXIMUM STATIC CAPACITY [Co]	1,810	8,051

NOTES:

1. BALL BEARINGS COME PRE-PACKED WITH GREASE.
2. ALL EXPOSED SURFACES HAVE BLACK OXIDE.
3. CUSTOM LASER ETCHING IS AVAILABLE UPON REQUEST.

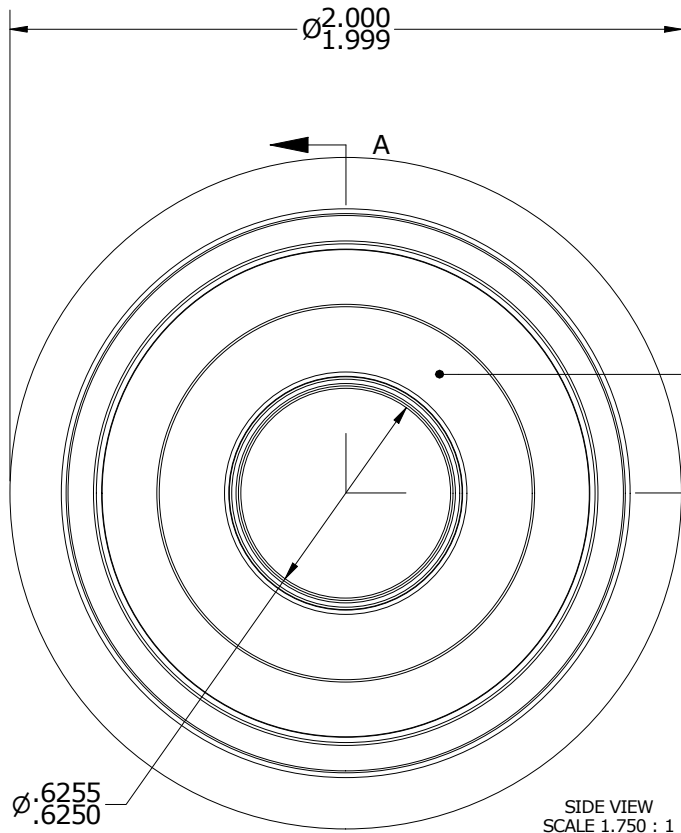
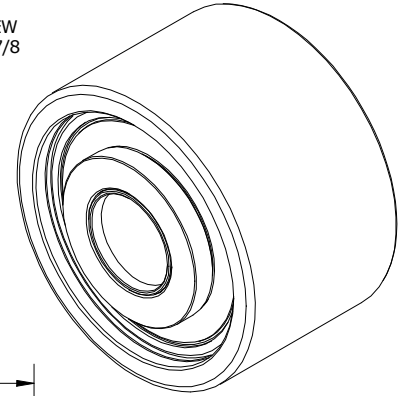
MS NO.

NSN NO.

DRAWING NO.

PHRY-200-A

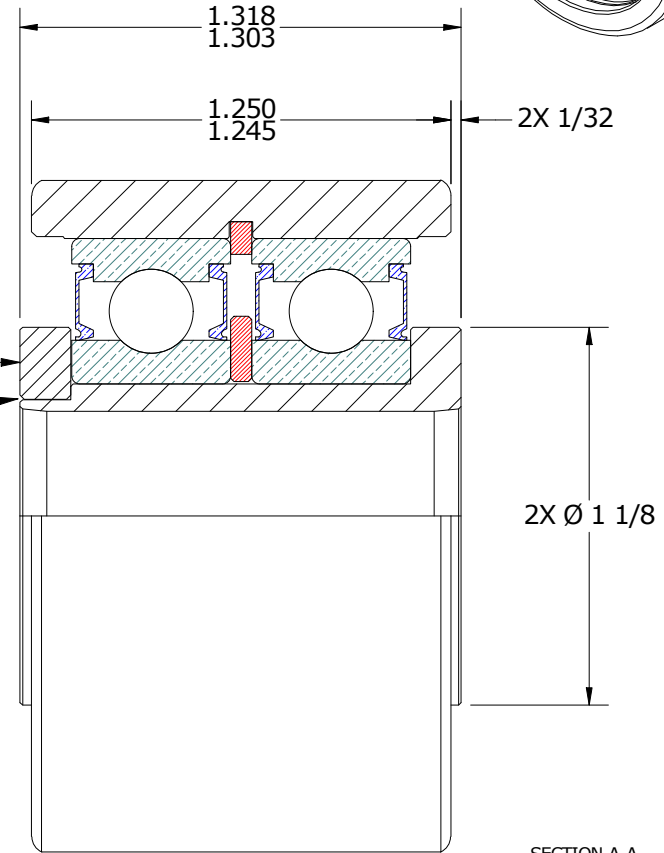
ISO VIEW  
SCALE 7/8



SIDE VIEW  
SCALE 1.750 : 1

LASER ETCH  
THIS FACE

SWEDGED  
HERE



SECTION A-A  
SCALE 1.750 : 1

MATERIAL NOTES:

- OUTER ROLLER HOUSING - BEARING STEEL, HEAT TREATED
- STUD - STEEL
- SPACER - STEEL
- WASHER - STEEL
- SNAP RING - SPRING STEEL
- BALL BEARING ASSEMBLY(S) - 6004.2RS ([2] REQ'D)

CUSTOMER PART#

XX =  $\pm .01$   
 XXX =  $\pm .005$   
 XXXX =  $\pm .0005$   
 ANGLES =  $\pm 1'$   
 INCH [METRIC]  
 FRACTION =  $\pm 1/32$

CARTER MANUFACTURING IS  
NOT RESPONSIBLE FOR  
TYPOGRAPHICAL ERRORS

**CARTER MANUFACTURING CO., INC.**

GRAND HAVEN, MICHIGAN 49417

ENGINEERING CHANGE ORDER NOTE

REVISION

PART NAME: ASSEMBLY

PRODUCT TYPE: PHRY

A

AUTHOR BY

DRAWN BY

CHK'D BY

SALES

MATERIAL

HG

SGW

MD

NC

NOTED

REVISION BY

DATE

DATE

DATE

DATE

SHEET

SGW

10/10/2019

10/4/2019

10/10/2019

10/10/2019

1 OF 2