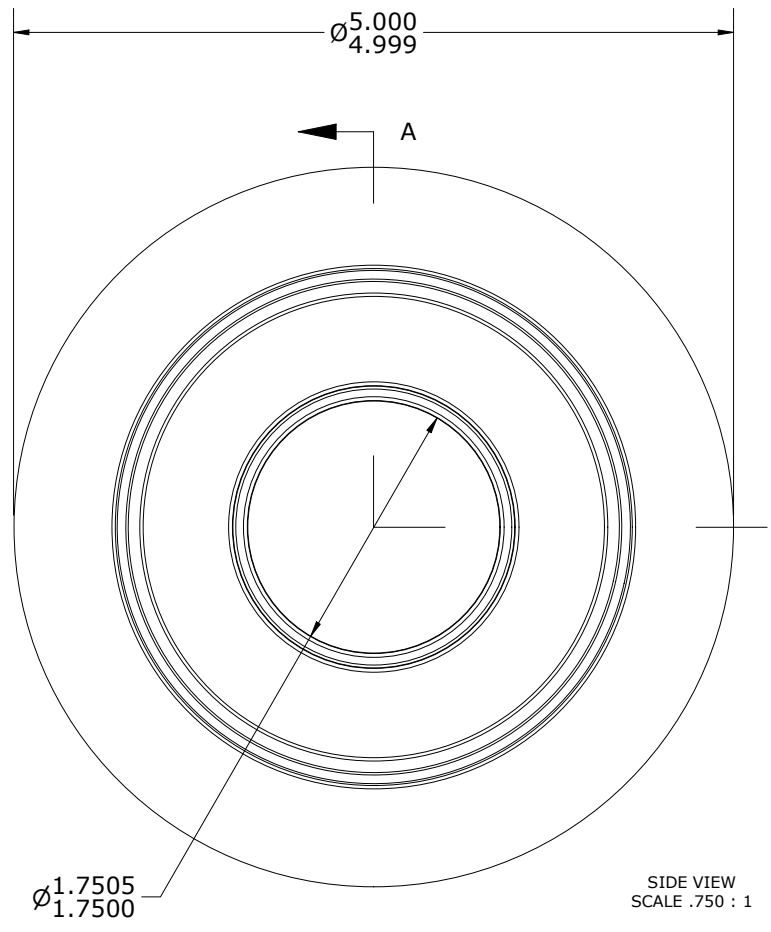
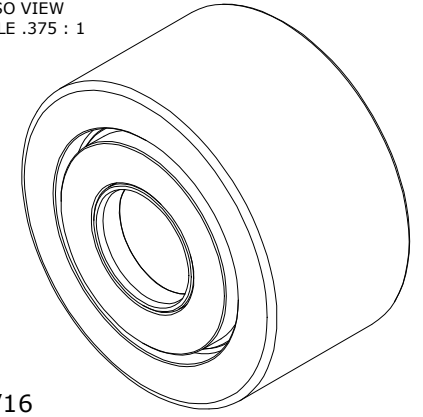


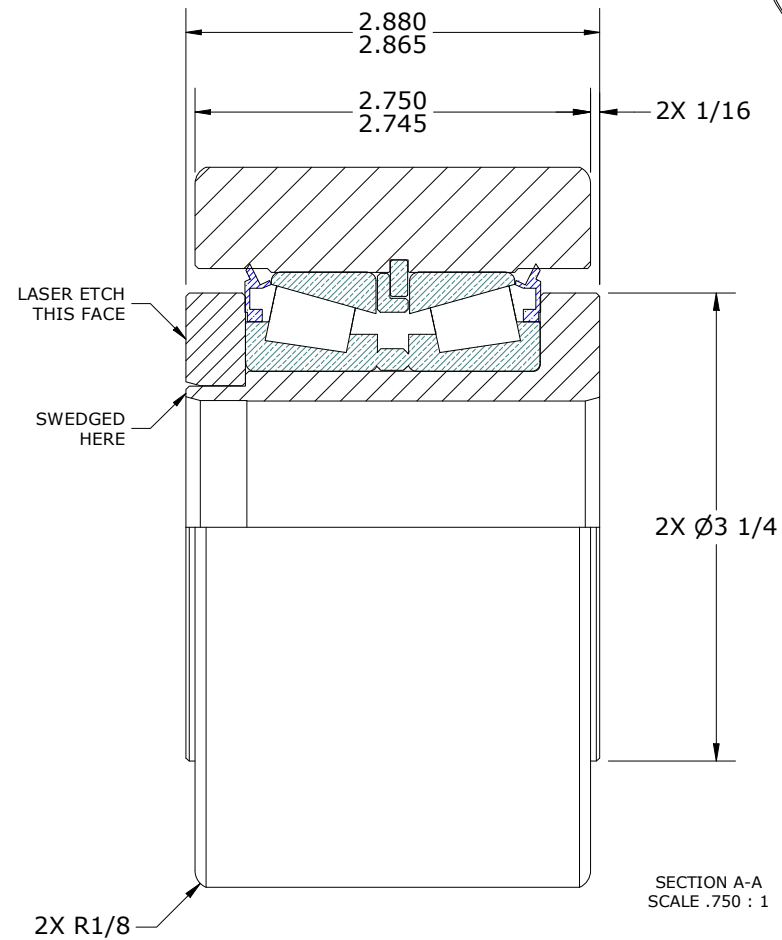
LOAD RATINGS	
RATING	Lbs
RADIAL BASIC DYNAMIC [C]	33,290
STATIC THRUST LOAD	32,500
MAXIMUM STATIC CAPACITY [Co]	51,900

- NOTES:
1. BEARING IS PACKED WITH NLGI GRADE 2, LITHIUM BASED GREASE (UNLESS OTHERWISE SPECIFIED)
 2. ALL EXPOSED SURFACES HAVE BLACK OXIDE
 3. CUSTOM LASER ETCHING IS AVAILABLE UPON REQUEST

ISO VIEW
SCALE .375 : 1



SIDE VIEW
SCALE .750 : 1



SECTION A-A
SCALE .750 : 1

MATERIAL NOTES:
 OUTER RING - BEARING STEEL, HEAT TREATED
 STUD - STEEL
 BEARING ASSEMBLY - TIMKEN P/N: JLM-506849-30 OR EQUIVALENT
 WASHER - STEEL

CUSTOMER PART#
 XX = ± .01
 XXX = ± .005
 XXXX = ± .0005
 ANGLES = ± 2'
 INCH [METRIC]
 FRACTION = ± 1/64

CARTER MANUFACTURING IS NOT RESPONSIBLE FOR TYPOGRAPHICAL ERRORS

CARTER MANUFACTURING CO., INC.
 GRAND HAVEN, MICHIGAN 49417

ENGINEERING CHANGE ORDER NOTE

REVISION	
B	AUTHOR BY HG
REVISION BY DJB	DATE 9/30/2024

PART NAME: ASSEMBLY				PRODUCT TYPE: Hi-Rollers™	
DRAWN BY SGW	CHK'D BY MD	SALES KR	MATERIAL NOTED	DATE 3/27/2012	SHEET 1 OF 2
DATE 3/26/2012	DATE 9/30/2024	DATE 3/27/2012	DATE 3/27/2012	DATE 3/27/2012	DATE 3/27/2012

CARTER STANDARD SURFACE FINISH IS MEASURED IN "Ra" UNITS UNLESS OTHERWISE SPECIFIED.