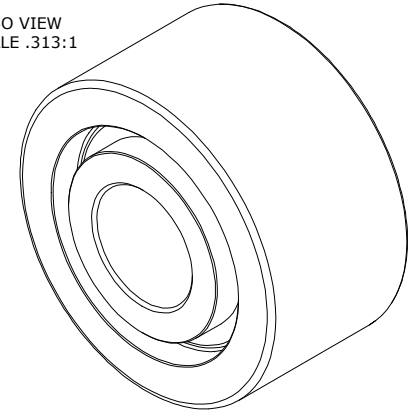


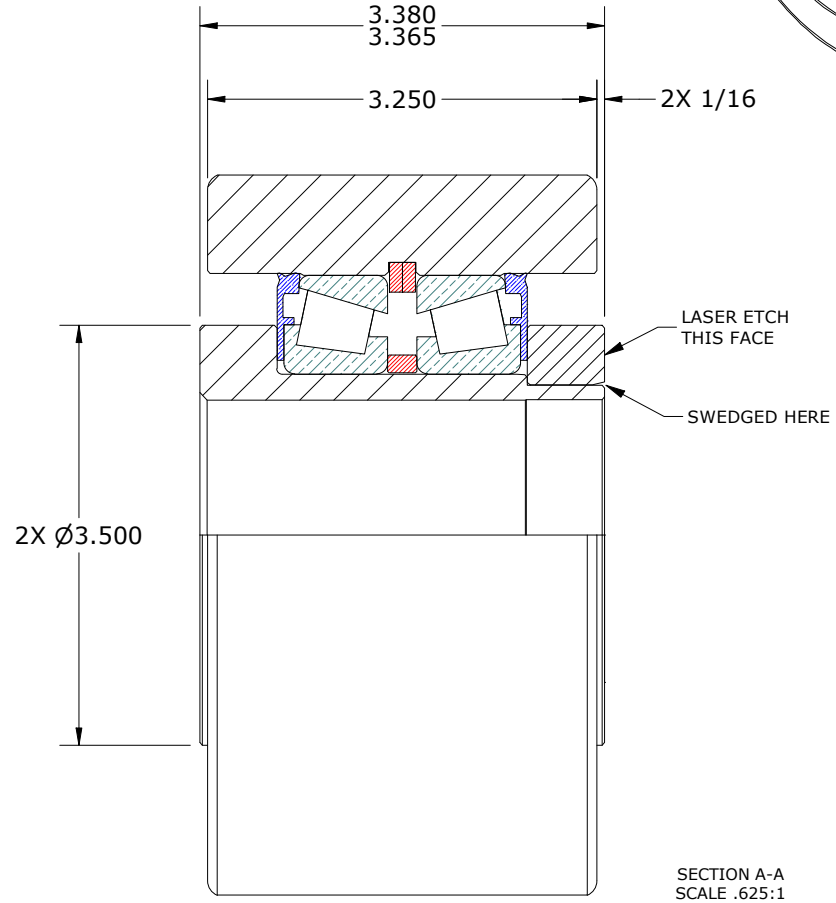
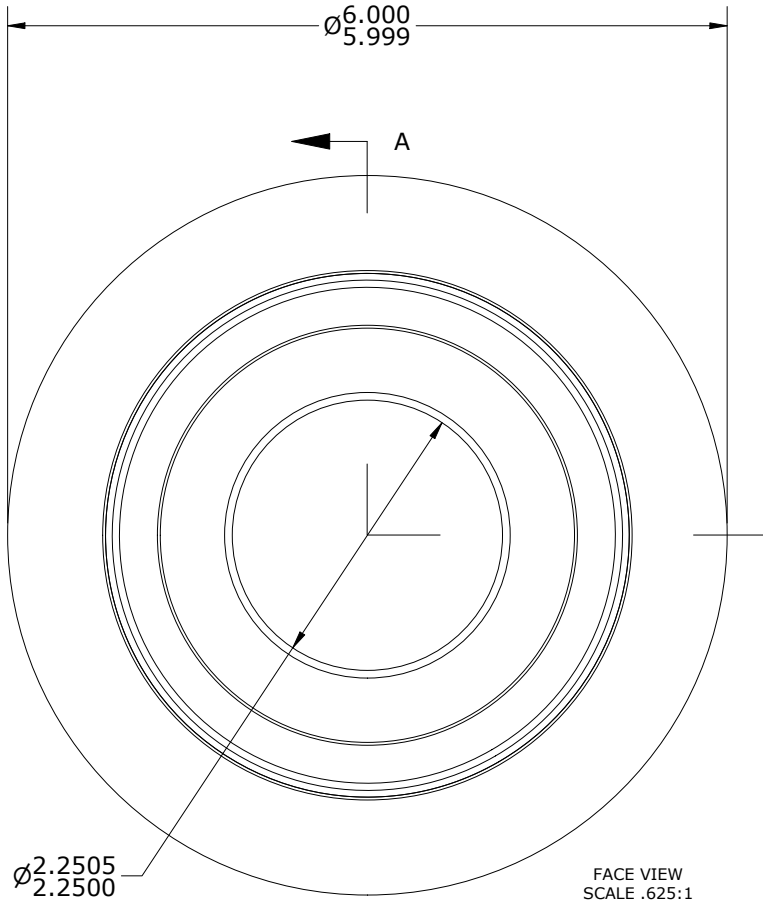
LOAD RATINGS		
RATING	lbf	Newtons
RADIAL BASIC DYNAMIC	35,840	159,424
STATIC THRUST LOAD	33,100	147,236
MAXIMUM STATIC CAPACITY	56,400	250,880

MS NO. _____ NSN NO. _____ DRAWING NO. PHRY-600-A

ISO VIEW
SCALE .313:1



- NOTES:
1. BEARING IS PACKED WITH NLGI GRADE 2, LITHIUM BASED GREASE (UNLESS OTHERWISE SPECIFIED)
 2. ALL EXPOSED SURFACES HAVE BLACK OXIDE
 3. CUSTOM LASER ETCHING IS AVAILABLE UPON REQUEST



MATERIAL NOTES:
 OUTER ROLLER HOUSING - BEARING STEEL, HEAT TREATED
 STUD - STEEL
 TAPERED SET - TIMKEN P/N: 359LA-90329 OR EQUIVALENT
 WASHER - STEEL

CUSTOMER PART#	XX = ± .01 XXX = ± .005 XXXX = ± .0005 ANGLES = ± 2' INCH [METRIC] FRACTION = ± 1/64
ENGINEERING CHANGE ORDER NOTE	

CARTER MANUFACTURING IS NOT RESPONSIBLE FOR TYPOGRAPHICAL ERRORS		CARTER MANUFACTURING CO., INC. GRAND HAVEN, MICHIGAN 49417			
REVISION		PART NAME: ASSEMBLY			PRODUCT TYPE: Hi-Roller™
B	AUTHOR BY HG	DRAWN BY AJH	CHK'D BY MD	SALES NC	MATERIAL NOTED
REVISION BY SGW	DATE 4/7/2022	DATE 2/26/2003	DATE 4/6/2022	DATE 4/8/2022	SHEET 1 OF 2