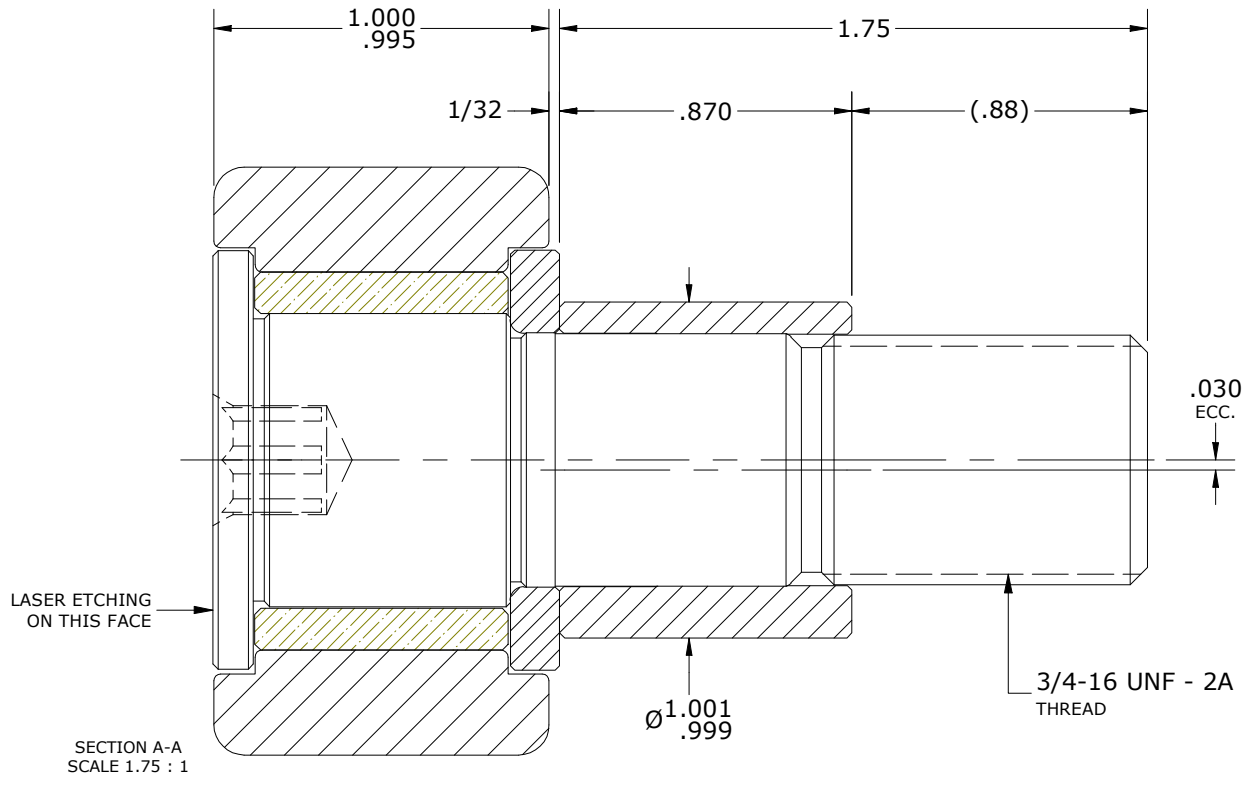
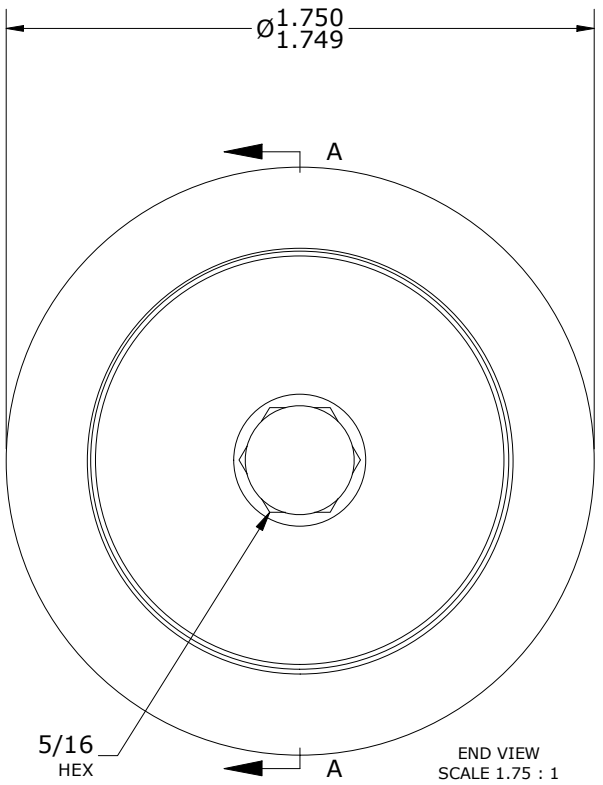
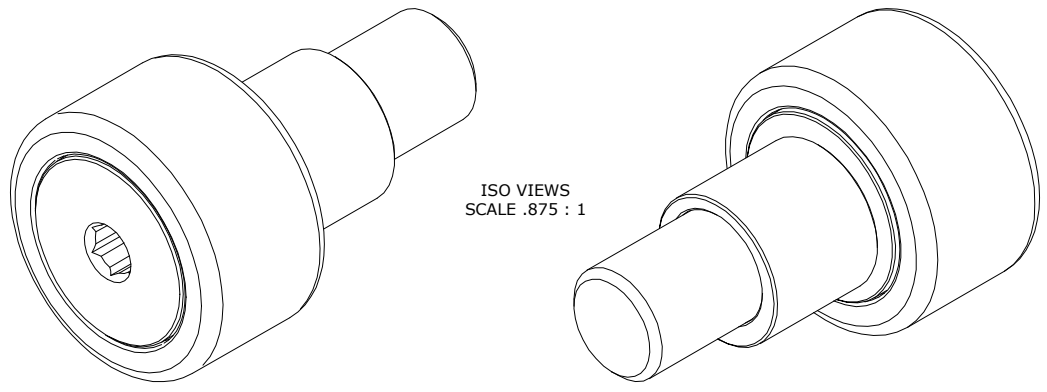


RECOMMENDED MOUNTING HOLE Ø		
Limit	Inch	mm
MIN	1.002	25.451
MAX	1.004	25.502

MAXIMUM CLAMPING TORQUE**		
Thread Type	Inch lbf	Nm
LUBRICATED	625	70.5

- NOTES:
 1. BUSHING IS IMPREGNATED WITH CARTER STANDARD NEVERLUBE LUBRICANT.
 2. ALL EXPOSED SURFACES HAVE BLACK OXIDE.
 3. CUSTOM LASER ETCHING IS AVAILABLE UPON REQUEST.



**TORQUE SPECIFICATION IS BASED ON LUBRICATED THREADS, IF USING DRY THREADS DOUBLE TORQUE VALUE

MATERIAL NOTES:
 OUTER RING - BEARING STEEL, HEAT TREATED
 STUD - STEEL
 BUSHING - SINTERED BRONZE
 WASHER - BEARING STEEL, HEAT TREATED
 ECCENTRIC SLEEVE - STEEL

CUSTOMER PART#
 XX = ± .01
 XXX = ± .005
 XXXX = ± .0005
 ANGLES = ± 1'
 INCH [METRIC]
 FRACTION = ± 1/32

CARTER MANUFACTURING IS NOT RESPONSIBLE FOR TYPOGRAPHICAL ERRORS

CARTER MANUFACTURING CO., INC.
 GRAND HAVEN, MICHIGAN 49417

ENGINEERING CHANGE ORDER NOTE

REVISION		PART NAME: ASSEMBLY			PRODUCT TYPE: SFH	
B	AUTHOR BY HG	DRAWN BY SGW	CHK'D BY MD	SALES NC	MATERIAL NOTED	
REVISION BY SGW	DATE 2/25/2021	DATE 1/23/2019	DATE 2/25/2021	DATE 1/29/2019	SHEET 1 OF 2	