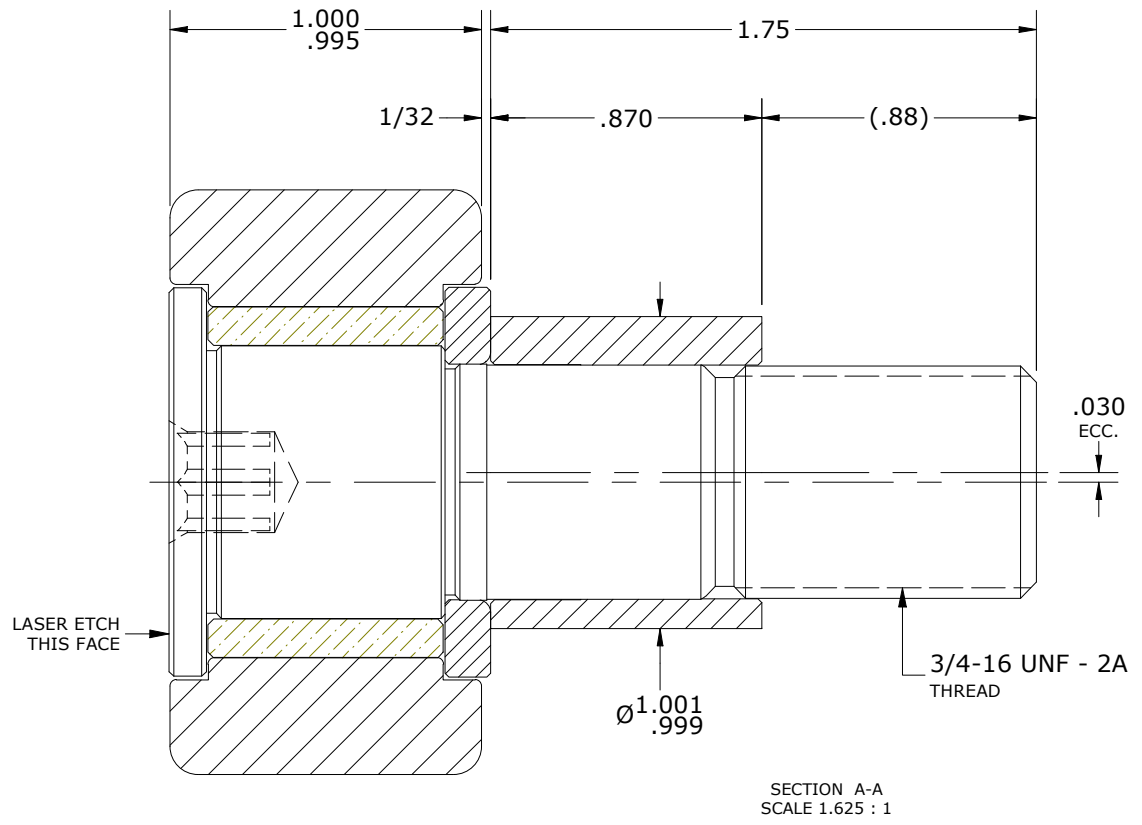
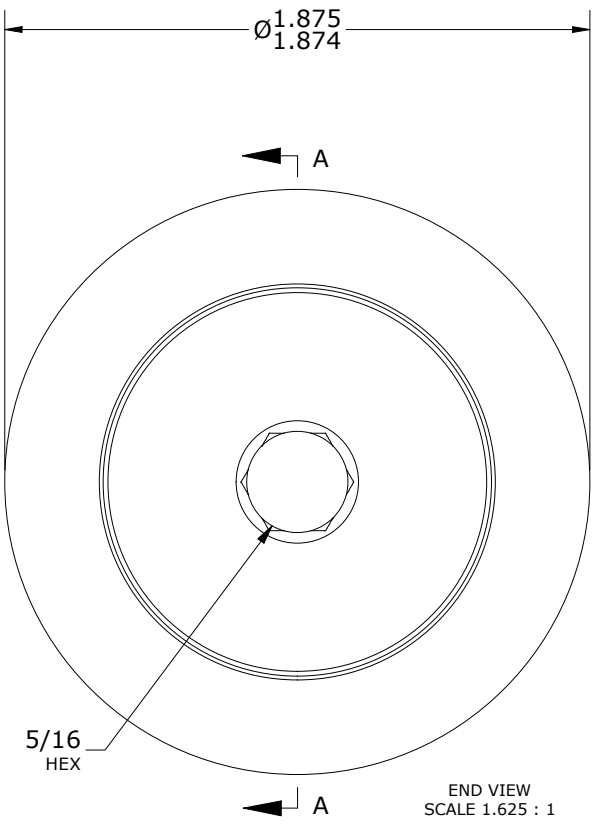
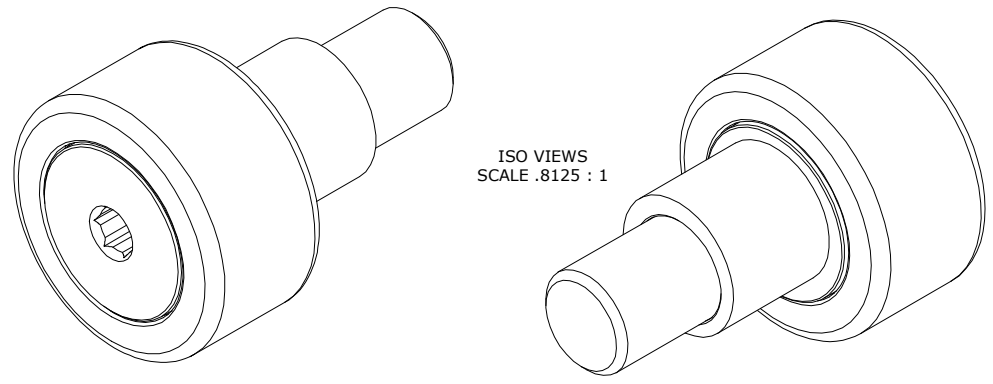


RECOMMENDED MOUNTING HOLE Ø		
Limit	Inch	mm
MIN	1.002	25.4510
MAX	1.004	25.5020

MAXIMUM CLAMPING TORQUE**	
Inch lbf	Nm
625	70.5

- NOTES:
- BUSHING IS IMPREGNATED WITH CARTER STANDARD NEVERLUBE LUBRICANT.
 - ALL EXPOSED SURFACES HAVE BLACK OXIDE.
 - CUSTOM LASER ETCHING IS AVAILABLE UPON REQUEST.



**TORQUE SPECIFICATION IS BASED ON LUBRICATED THREADS, IF USING DRY THREADS DOUBLE TORQUE VALUE.

MATERIAL NOTES:

OUTER RING - BEARING STEEL, HEAT TREATED
STUD - STEEL
BUSHING - SINTERED BRONZE
WASHER - BEARING STEEL, HEAT TREATED
ECCENTRIC SLEEVE - STEEL

CUSTOMER PART#	XX = ± .01 XXX = ± .005 XXXX = ± .0005 ANGLES = ± 1' INCH [METRIC] FRACTION = ± 1/32
ENGINEERING CHANGE ORDER NOTE	

CARTER MANUFACTURING IS NOT RESPONSIBLE FOR TYPOGRAPHICAL ERRORS				CARTER MANUFACTURING CO., INC. GRAND HAVEN, MICHIGAN 49417			
REVISION				PART NAME: ASSEMBLY		PRODUCT TYPE: SFHE	
A	AUTHOR BY HG	DRAWN BY SGW	CHK'D BY MD	SALES NC	MATERIAL NOTED		
REVISION BY SGW	DATE 6/23/2020	DATE 10/25/2000	DATE 6/22/2020	DATE 6/23/2020	SHEET 1 OF 2		