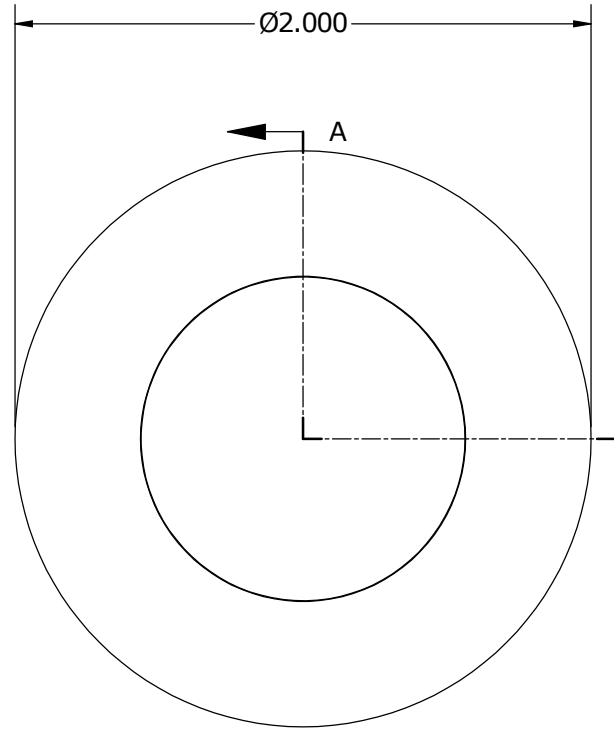
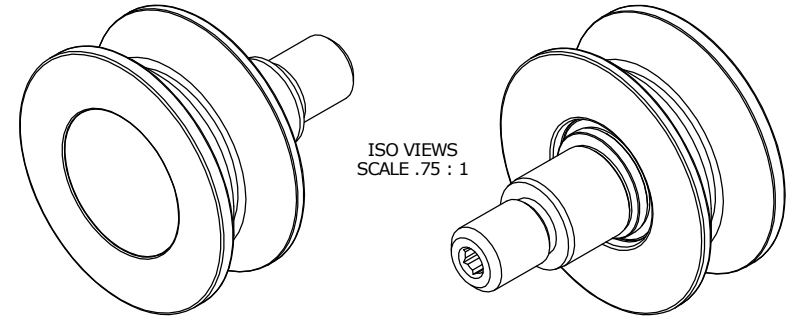
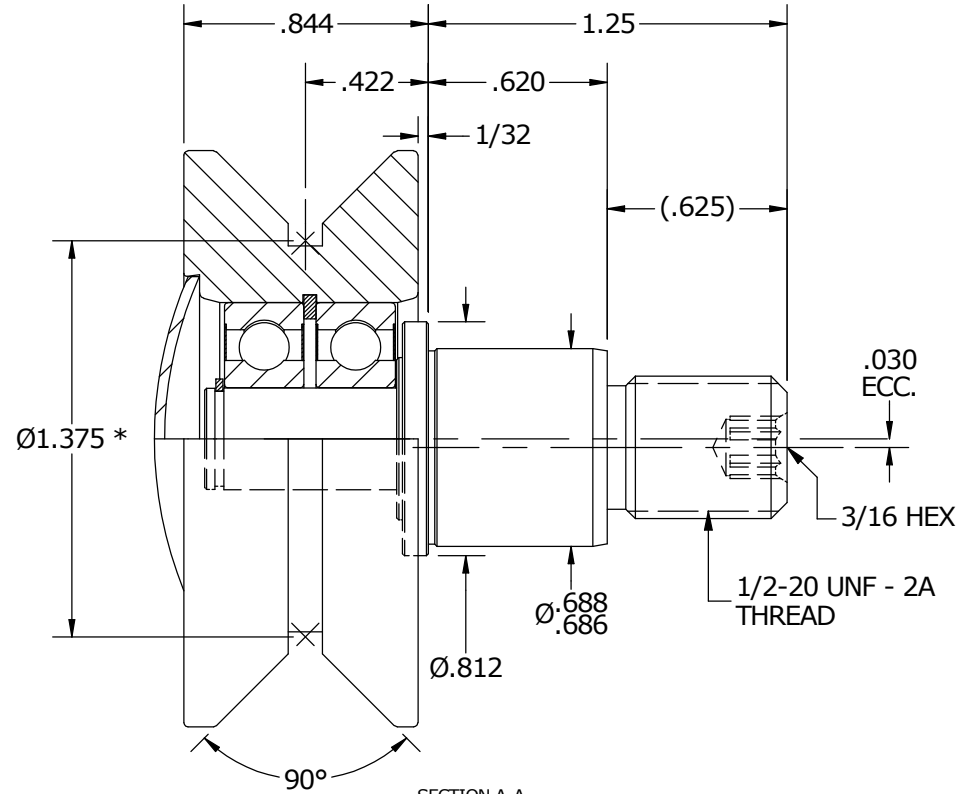


LOAD RATINGS	
RATING	Lbs
RADIAL BASIC DYNAMIC	1,350
STATIC THRUST LOAD	370
MAXIMUM STATIC CAPACITY	600

- NOTES:  
 1. BALL BEARINGS COME PRE-PACKED WITH GREASE  
 2. STUD & END CAP HAVE BLACK OXIDE ON ALL EXPOSED SURFACES



END VIEW  
SCALE 1.5 : 1



SECTION A-A  
SCALE 1.5 : 1

\*(DIMENSION IS PULLED FROM VIRTUAL POINTS)

MATERIAL NOTES:

- OUTER - BEARING STEEL, HEAT TREATED
- STUD - COLD ROLLED STEEL
- BEARING ASSEMBLIES - 6092RS
- END CAP - COLD ROLLED STEEL
- RETAINING RINGS - SPRING STEEL

CUSTOMER PART#

XX = ± .01  
 XXX = ± .005  
 XXXX = ± .0005  
 ANGLES = ± 1'  
 INCH [METRIC]  
 FRACTION = ± 1/32

CARTER MANUFACTURING IS NOT RESPONSIBLE FOR TYPOGRAPHICAL ERRORS

**CARTER MANUFACTURING CO., INC.**  
 GRAND HAVEN, MICHIGAN 49417

ENGINEERING CHANGE ORDER NOTE

REVISION

PART NAME: ASSEMBLY

REVISION	AUTHOR BY	DRAWN BY	CHK'D BY	SALES	MATERIAL
B	HG	AJH	SGW	KR	NOTED
REVISION BY	DATE	DATE	DATE	DATE	SHEET
MD	5/8/2015	7/9/2002	5/8/2015	5/8/2015	1 OF 2