

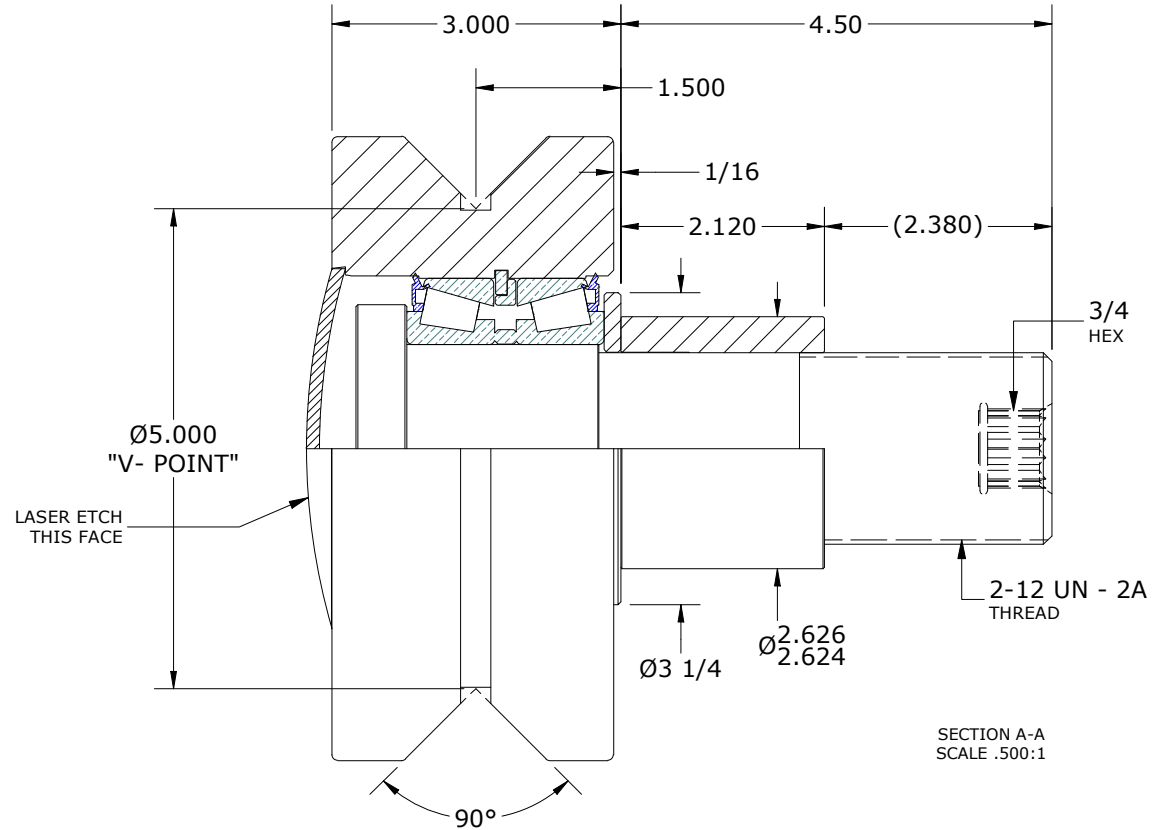
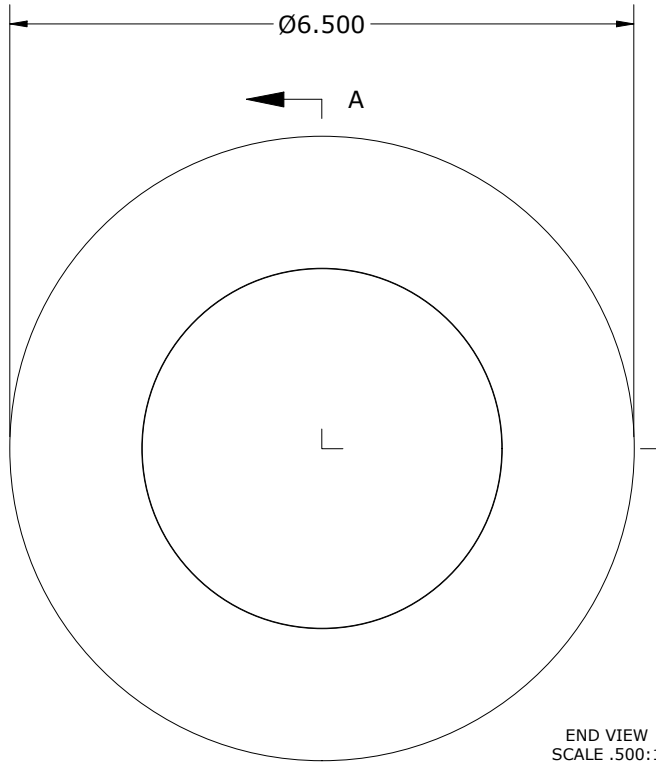
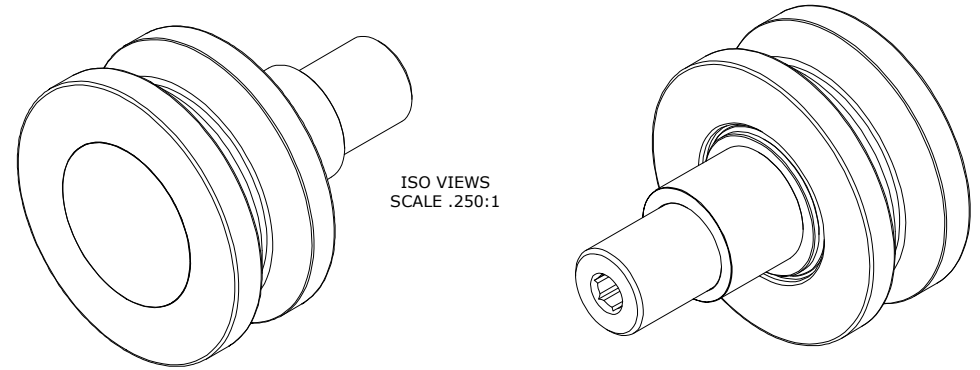
LOAD RATINGS		
RATING	lbf	Newtons
RADIAL BASIC DYNAMIC	33,290	148,081
STATIC THRUST LOAD	32,500	144,567
MAXIMUM STATIC CAPACITY	51,900	230,863

- NOTES:
1. BEARING IS PACKED WITH NLGI GRADE 2, LITHIUM BASED GREASE (UNLESS OTHERWISE SPECIFIED)
 2. ALL EXPOSED SURFACES HAVE BLACK OXIDE
 3. CUSTOM LASER ETCHING IS AVAILABLE UPON REQUEST

MS NO.	NSN NO.	DRAWING NO.	VHRE-650-A
--------	---------	-------------	------------

RECOMMENDED MOUNTING HOLE Ø		
Limit	Inch	mm
MIN	2.628	66.7512
MAX	2.627	66.7258

MAXIMUM CLAMPING TORQUE*		
Thread Type	ft-lbf	N-m
LUBRICATED	50	68



**TORQUE SPECIFICATION IS BASED ON LUBRICATED THREADS, IF USING DRY THREADS DOUBLE TORQUE VALUE

MATERIAL NOTES: OUTER ROLLER HOUSING- BEARING STEEL, HEAT TREATED STUD - STEEL WASHER - STEEL END CAP - STEEL BEARING ASSY. - JLM-506489-30 SEALS - SYNTHETIC ECCENTRIC SLEEVE - STEEL	CUSTOMER PART#	XX = ± .01 XXX = ± .005 XXXX = ± .0005 ANGLES = ± 1' INCH [METRIC] FRACTION = ± 1/32	CARTER MANUFACTURING IS NOT RESPONSIBLE FOR TYPOGRAPHICAL ERRORS				CARTER MANUFACTURING CO., INC. GRAND HAVEN, MICHIGAN 49417			
	ENGINEERING CHANGE ORDER NOTE		REVISION		PART NAME: ASSEMBLY		PRODUCT TYPE: VHR			
	A	AUTHOR BY HG	DRAWN BY SGW	CHK'D BY MD	SALES NC	MATERIAL NOTED				
	REVISION BY SGW	DATE 9/3/2021	DATE 9/3/2021	DATE 9/3/2021	DATE 9/3/2021	SHEET 1 OF 2				