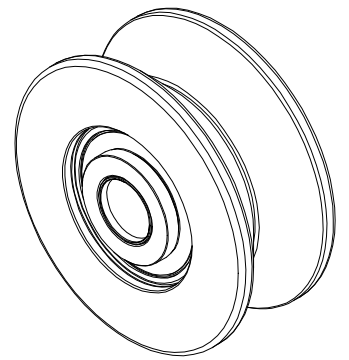


LOAD RATINGS		
RATING	lbf	Newtons
RADIAL BASIC DYNAMIC [C]	3,400	15,124
STATIC THRUST LOAD	1,120	4,982
MAXIMUM STATIC CAPACITY [Co]	1,810	8,051

NOTES:
 1. BALL BEARING(S) COMES PRE-PACKED WITH GREASE.
 2. ALL EXPOSED SURFACES HAVE BLACK OXIDE.
 3. CUSTOM LASER ETCHING IS AVAILABLE UPON REQUEST.

MS NO. _____ NSN NO. _____ DRAWING NO. _____ VHR300-A

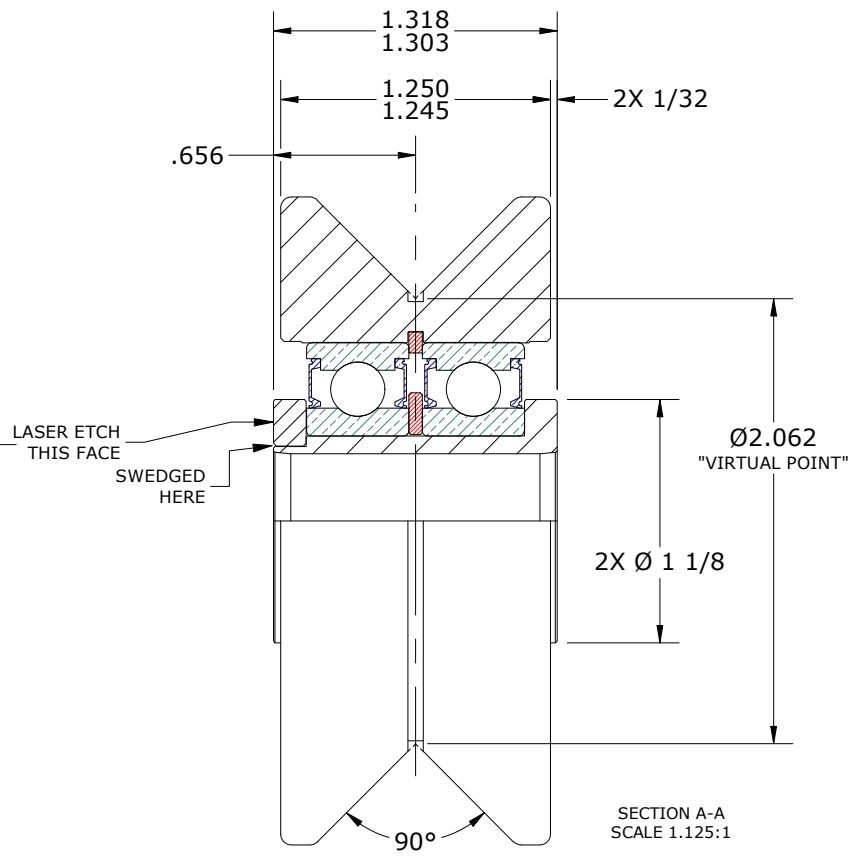
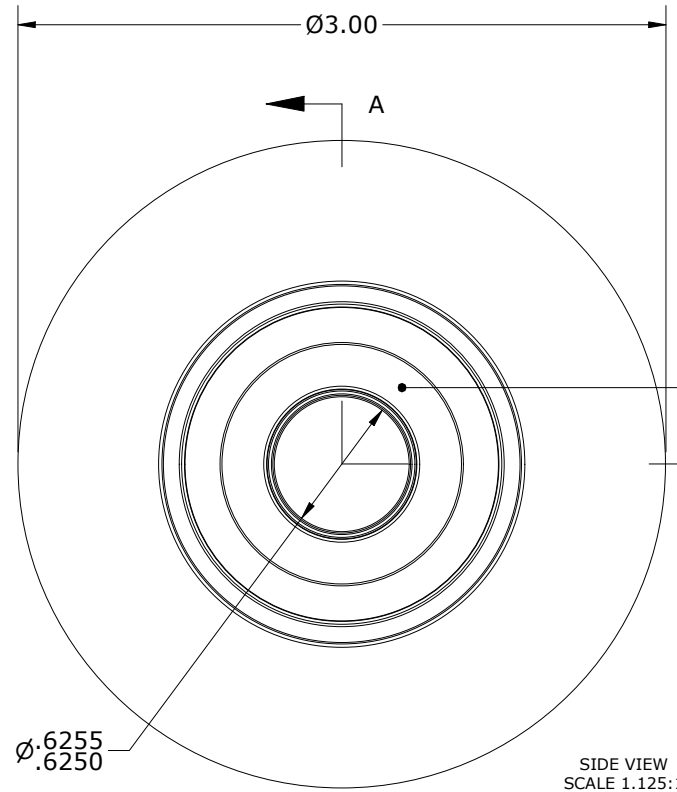
ISO VIEW
SCALE .563



SIGNED DRAWING APPROVAL REQUIRED

PLEASE REVIEW AND VERIFY INFORMATION ON ALL SHEETS & RETURN COPY WITH SIGNED AND DATED APPROVAL, AND/OR REQUIRED CHANGES. CARTER WILL NOT PROCEED WITH ORDER UNTIL APPROVAL IS RECEIVED

SIGNED DATE APPROVED REJECTED



MATERIAL NOTES:

OUTER ROLLER HOUSING - BEARING STEEL, HEAT TREATED
 STUD - STEEL
 SPACER - STEEL
 WASHER - STEEL
 SNAP RING - SPRING STEEL
 BALL BEARING ASSEMBLY(S) - 6004.2RS ([2] REQ'D)

CUSTOMER PART#	XX = ± .01 XXX = ± .005 XXXX = ± .0005 ANGLES = ± 1' INCH [METRIC] FRACTION = ± 1/32
ENGINEERING CHANGE ORDER NOTE	

CARTER MANUFACTURING IS NOT RESPONSIBLE FOR TYPOGRAPHICAL ERRORS				CARTER MANUFACTURING CO., INC. GRAND HAVEN, MICHIGAN 49417			
REVISION				PART NAME: ASSEMBLY		PRODUCT TYPE: VHR3	
A	AUTHOR BY HG	DRAWN BY SGW	CHK'D BY MD	SALES NC	MATERIAL NOTED		
REVISION BY SGW	DATE 4/13/2020	DATE 4/13/2020	DATE 4/13/2020	DATE 4/13/2020	SHEET 1 OF 2		